

I . Summary of Building

- 【Name】 伊都ゲストハウス / Ito Guest House
- 【Address】 〒819-0385 福岡市西区元岡744番地(九州大学構内)
744banchi motooka nishi-ku fukuoka-shi
- 【Building】 3 stories of Wooden
- 【Space】 Building space 859m² / Floor space 2,110m²
- 【Completion】 March in 2012
- 【Contact】 Guesthouse manager office
TEL / FAX : 092-802-2141 E-mail : guesthouse20120401@gmail.com
For details : http://www.isc.kyushu-u.ac.jp/supportcenter/housing/international_residents
* Japanese only

【The No. of rooms】

Single	25 rooms ※including one Welfare correspondence room
Luxury Single	2 rooms
Couple	4 rooms
Family	2 rooms

- 【Common Use】 kitchen / Lounge
Laundry room

- 【Common Institution】 Hall / Meeting room / Japanese room



II. Room Types & Facilities

① Single rooms (21.5m²) / Luxury Single rooms (27.3m²)

【Facilities】 Desk/Chair/Bed/Wardrobe/Refrigerator/Air conditioner/Unit Bathroom/Western toilet/Electric kettle/Kitchenette
LAN access (need a cable) / Bedding rental (only for applicant with payment)



② Couple rooms (43.1m²) / Family rooms (58.0m²)

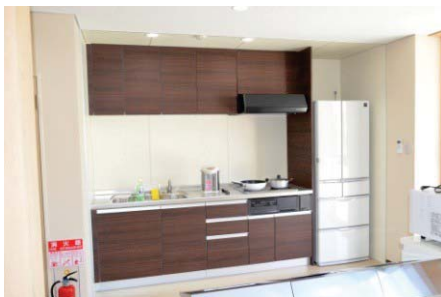
【Facilities】 Table/Sofa/TV/Desk/Chair/Wardrobe/Refrigerator/Air conditioner/Unit Bathroom/Western toilet/Microwave oven/Electric kettle/Washing machine with Laundry dryer/ LAN access (need a cable) / Bedding rental (only for applicant with payment) / Kitchenette
Bed (1 double size for Couple / 1 double size and 2 single size for Family)



③ Common use

- kitchen space : Kitchen/Refrigerator/Microwave oven
- Laundry room : washing machines (100Yen/time) / Laundry dryer (200Yen/time)

- Lounge : Table/Chair
- Amenity for rental : hair drier/iron



III. Common Institutions

① Hall (seating capacity of 56 person)

【 Facilities 】Desk/Chair/Projector/Microphone/Projector Screen/Blu-ray disc player



② Meeting room (seating capacity of 15 person)

【 Facilities 】Desk/Chair/Screen/Projector/White board



③ Japanese room (about 13. 0m²)

【 Facilities 】Legless chair/Low table/Mizuya: Japanese tea style shelf/Furnace for Japanese tea style

