
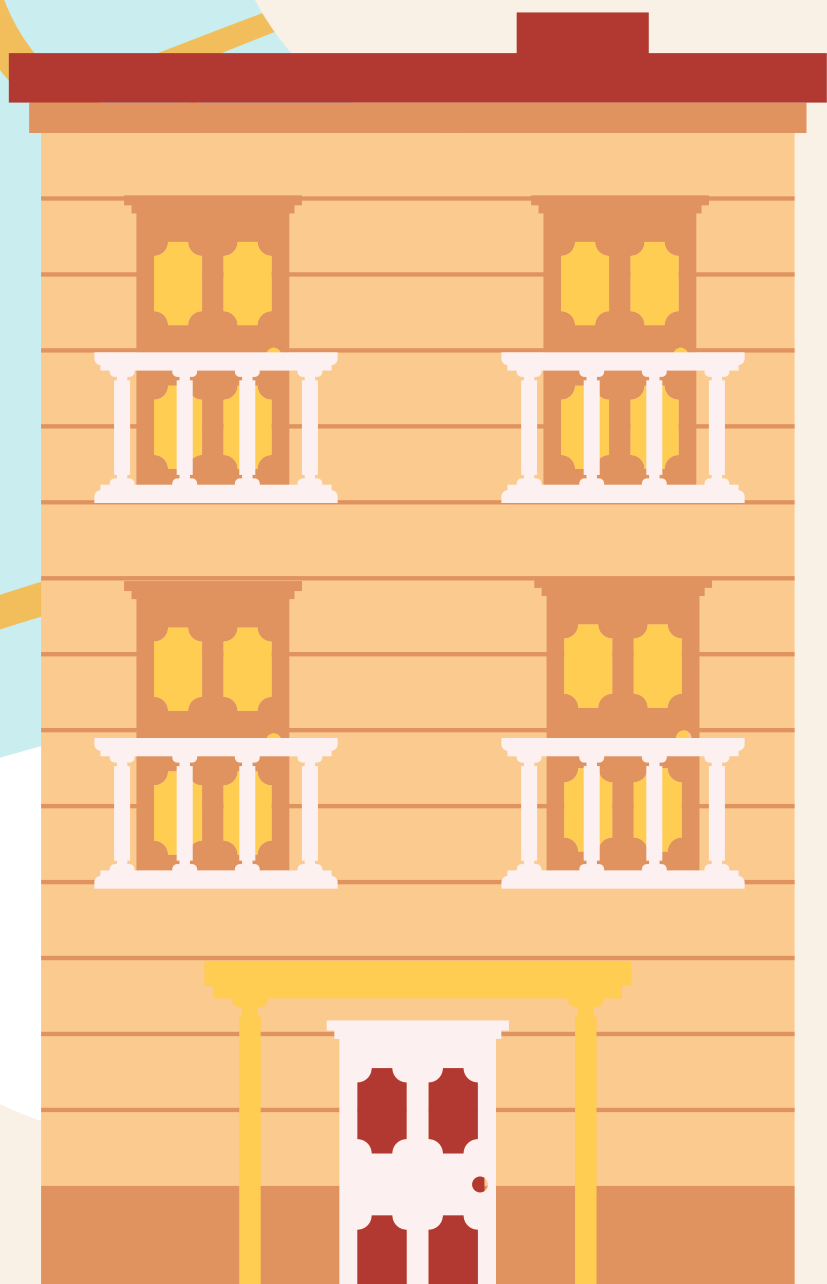


# FROM FUKUOKA AIRPORT TO YOUR DORM!

Presented by: Q-Mate 



# WELCOME TO KYUSHU UNIVERSITY

Hello! We're Q-Mate, a student support team run by Kyushu University students.

Don't hesitate to reach out to us if you have any questions.

This slide was made to help you get to your dormitory from Fukuoka airport.



- HOW TO:**
1. USE THE FREE AIR-PORT SHUTTLE BUS
  2. USE THE FUKUOKA CITY SUBWAY SYSTEM
  3. RIDE THE BUS
  4. USEFUL APPS

# OUTLINE

**BOARDING PASS TO:**



1. DORM I,II,III (ITO)
2. ITO HARMONY HOUSE (ITO)
3. SETTLE INTERNATIONAL (ITO)
4. FUK CITY INTL CENTER (OHASHI/CHIKUSHI)
5. IJIRI INTL HOUSE (OHASHI/CHIKUSHI)
6. CHIKUSHI INTL HOUSE (CHIKUSHI)
7. MAIDASHI INTL HOUSE (MAIDASHI)

Click on the table of contents to jump to each page.



# HOW TO USE THE FREE AIRPORT SHUTTLE BUS

[INTL TERMINAL <-> DOMESTIC TERMINAL]

**\*THE SUBWAY IS FROM THE DOMESTIC TERMINAL**

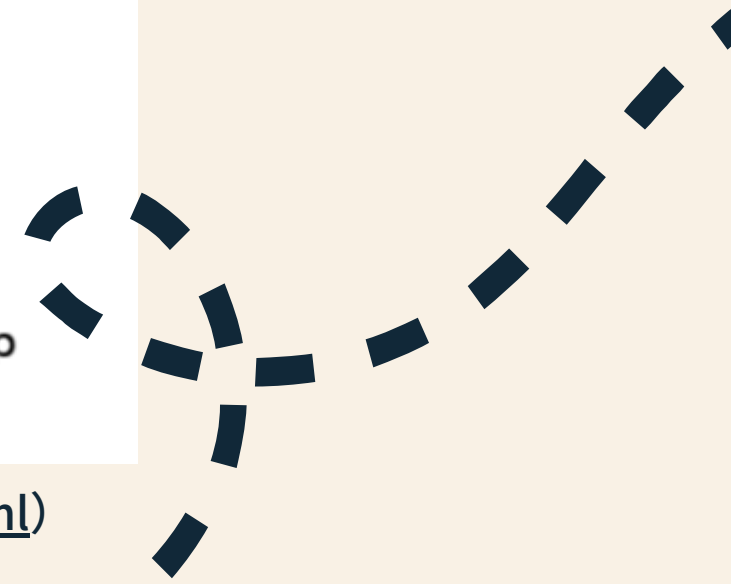
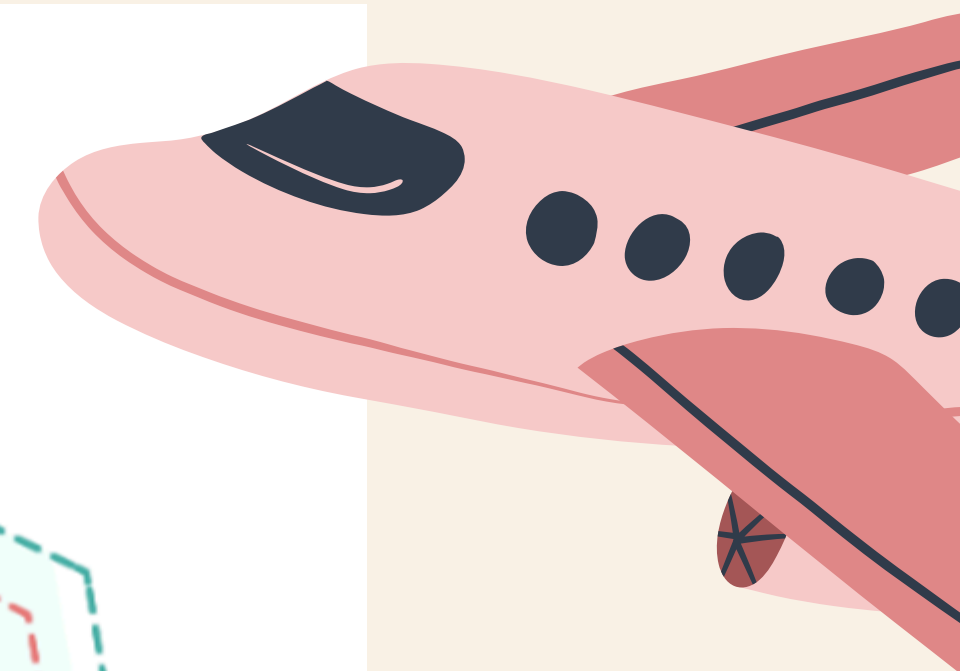
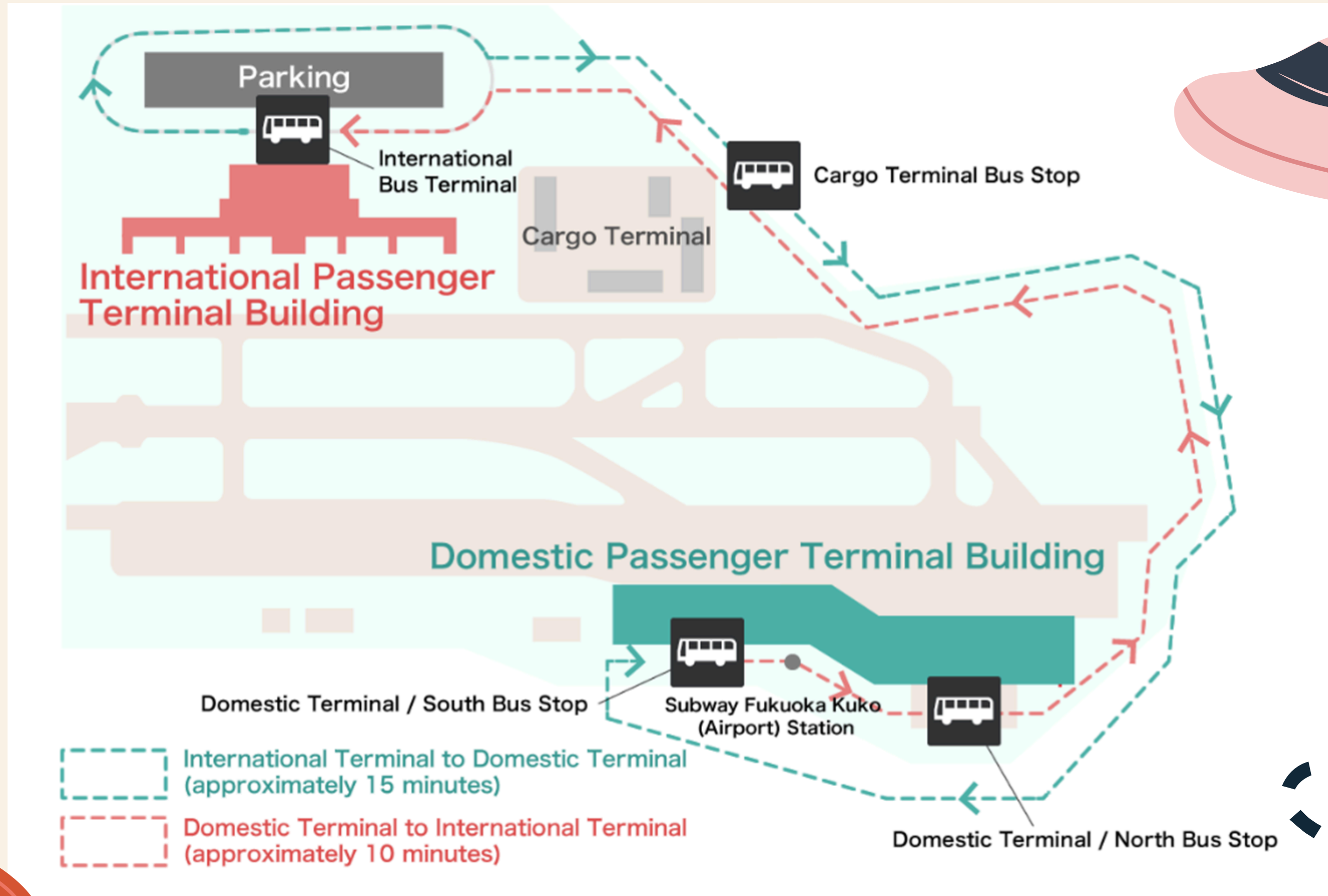
**"No shuttle bus needed if you arrive at Domestic Terminal, subway is there."**

There are **NO** direct subway access from the International Terminal.

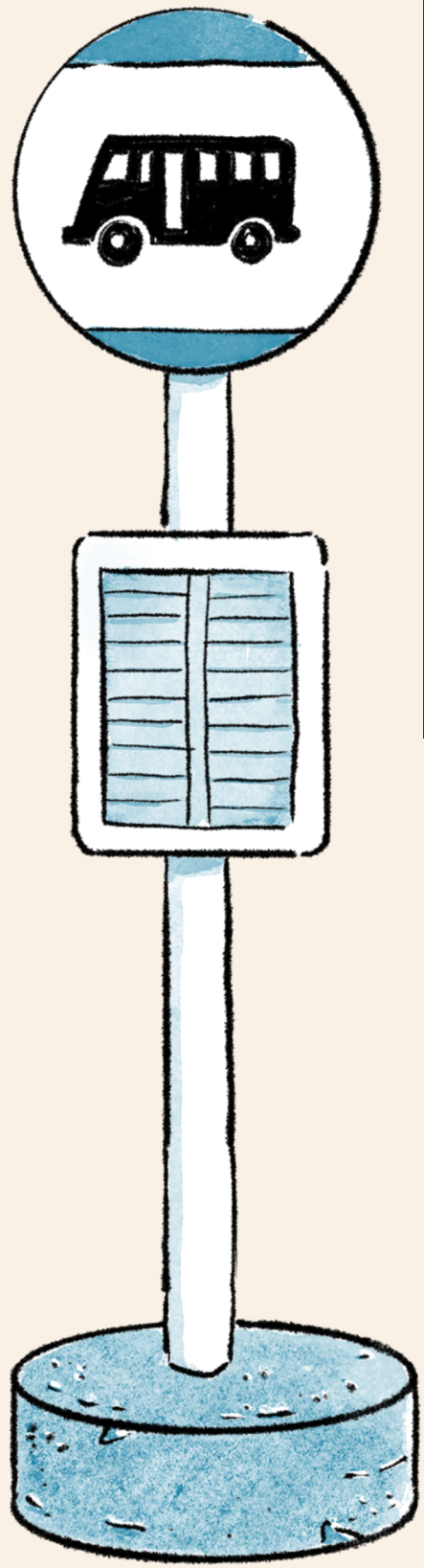
Take the shuttle bus from International Terminal to Domestic Terminal for the subway station.



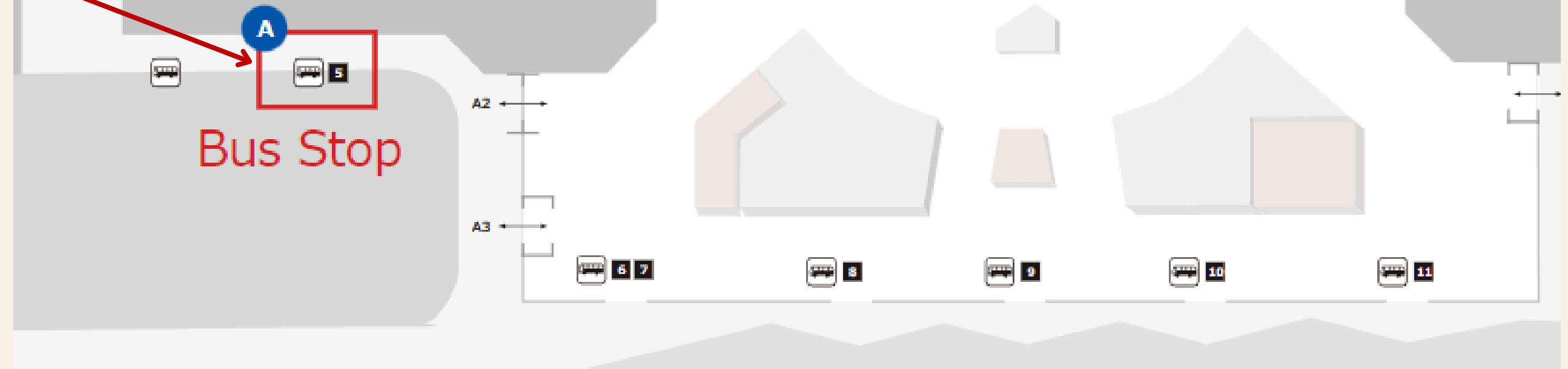
# DOMESTIC & INTERNATIONAL TERMINAL BUS COURSE MAP



# SHUTTLE BUS STOP



INTERNATIONAL TERMINAL 1F



※Quoted from Fukuoka Airport HP (<https://www.fukuoka-airport.jp/en/access/bus2.html>)

# SHUTTLE BUS TIMETABLE

SCAN THE QR CODE TO  
SEE THE FULL TIMETABLE

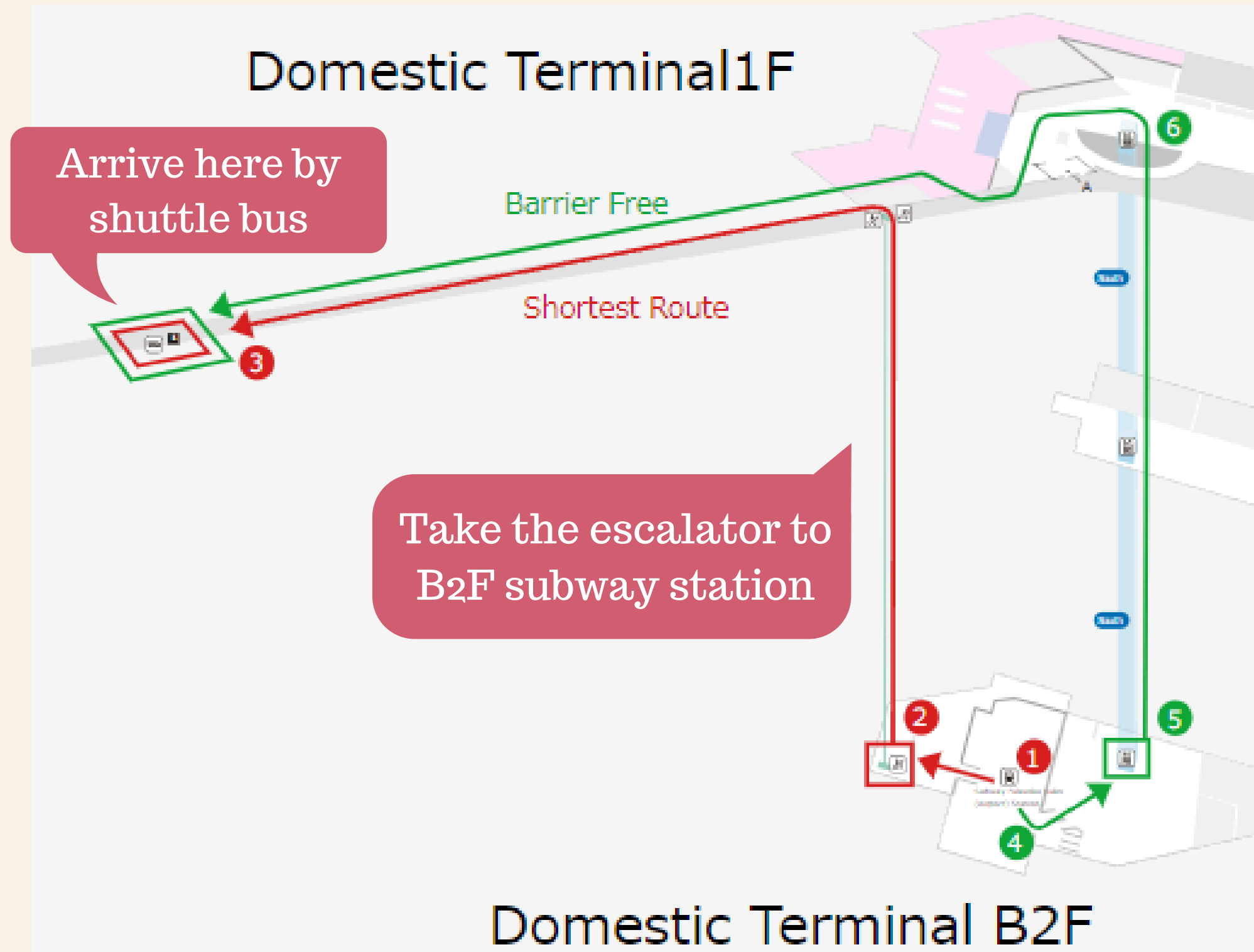


Hour	International Passenger Terminal Building Bus Stop
6	17 23 29 35 41 47 53 59
7	
8	
9	
10	
11	
12	
13	every 6~7 min
14	
15	
16	
17	
18	
19	06 13 20 27 34 41 48 55
20	02 09 16 23 30 37 44 51 58
21	07 16 25 34 43 52
22	06 21 36 51
23	06 21

※Quoted from Fukuoka Airport HP (<https://www.fukuoka-airport.jp/en/access/bus2.html>)

# AFTER GETTING OFF THE SHUTTLE BUS...

Follow the **red** or **green** path for guidance.



## SHORTEST ROUTE



## BARRIER FREE

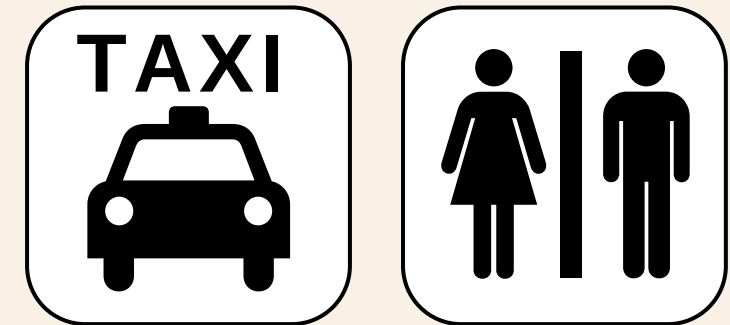


# HOW TO GET AROUND THE AIRPORT-ADDITIONAL SUPPORT




## Signs:

They indicate how to get to your destination. There are many signs in the airport, such as the one in the picture on the left.



## Information desk:

You can ask at any time. You can go to the nearest information desk by looking for the  icon on the floor guide/map to go to the nearest information desk.



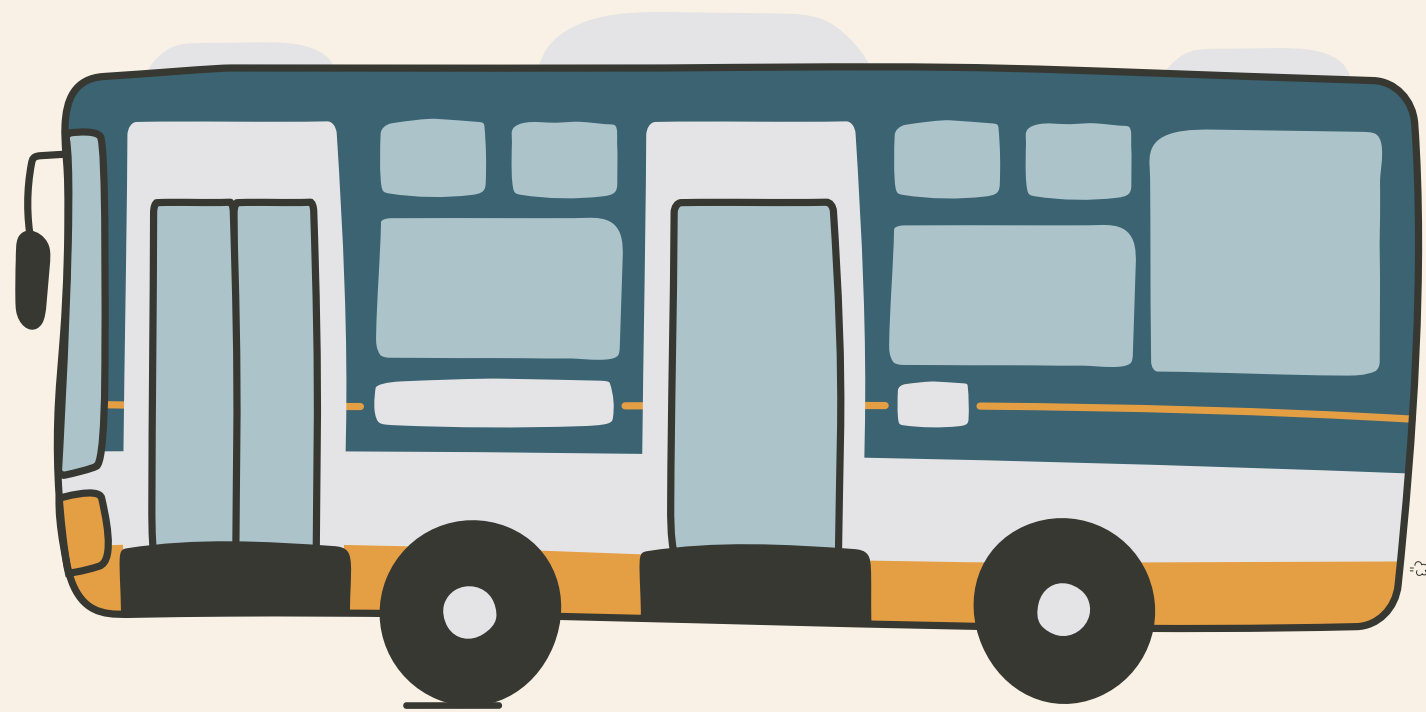
## You can also call for help

- Domestic Passenger Terminal Building  
092-621-6059(Opening hours: 6: 20~22: 20)
- International Passenger Terminal Building  
092-621-0303(Opening hours: 5: 00~21: 30)

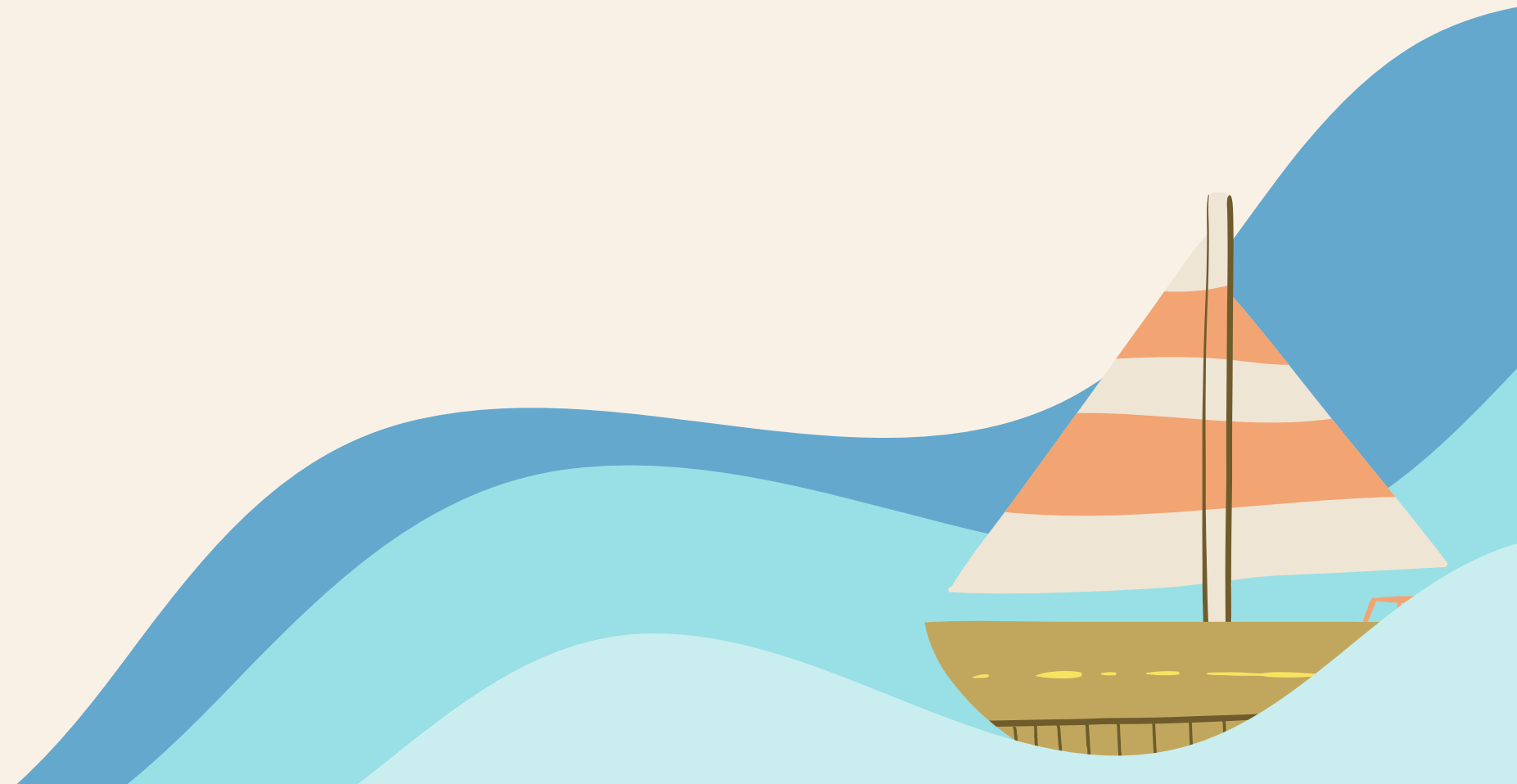
# REFERENCE VIDEO: FUKUOKA AIRPORT SHUTTLE BUS

Please scan the QR code to watch the video.

**Note:** this video shows how to ride from the domestic terminal to the international terminal.



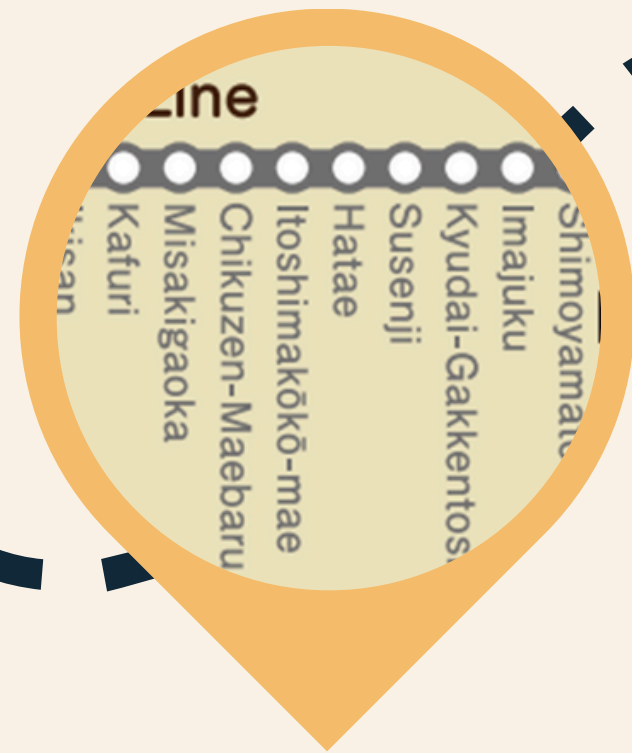
# HOW TO USE THE FUKUOKA CITY SUBWAY



# HOW TO USE THE FUKUOKA CITY SUBWAY



FIND AN ENTRANCE  
OF SUBWAY STATION



FIND YOUR  
DESTINATION



CHECK FARE



BUY A TICKET (きっぷ/  
切符/KIPPU) FROM  
THE VENDING MACHINE

# FIND AN ENTRANCE OF SUBWAY STATION



AFTER ARRIVING AT THE DOMESTIC TERMINAL BUS STOP,  
FIND AN ENTRANCE TO SUBWAY STATION.  
IT'S NEAR THE STOP!

# FIND YOUR DESTINATION

The Name of Dormitory	Your Destination
Dormitory 1, 2, 3 Ito Harmony House	Kyudai-Gakkentoshi Station
Settle International	Kyudai-Gakkentoshi Station or Hatae station
Fukuoka City International Center	Nakasu-Kawabata or Kushida-Jinja mae Station
Ijiri International House	<b>Ijiri Station</b> <i>*You need to transfer to Nishitetsu line at Tenjin Station first.</i>
Chikushi International House	<b>Onojo Station</b> <i>*You need to transfer to Zarai line (local, rapid train) at Hakata Station first</i>
Maidashi International House	Maidashi Kyudai-byoin mae Station



# HOW MUCH TO PAY

There is a map above the ticket vending machine with the price for each station from your starting point.

## For example...

To get to “**Tenjin**” station from your point, the fee is ¥260 for adults or ¥130 for children.

If you are unsure about the price, please ask the subway staff first.



# BUY A TICKET(きっぷ/切符/KIPPU) FROM THE VENDING MACHINE



**Choose the ticket price and number of tickets you need!!**

TICKET

TICKET

# HOW TO REQUEST ASSISTANCE



At the Subway station, you can find an office to the side of the gates as shown above. You can ask for help or show your ticket there.

# HOW TO USE THE BUS



# BRIEF INTRODUCTION



Before taking a bus, please **prepare cash (1,000yen) and coins or IC card** in advance.

When riding a bus, please get on the bus at the back door and get off the bus at the front door.

# WHEN YOU GET ON THE BUS...

## When Using cash

Please Take a numbered ticket from this box.



## When Using IC card

Please make your IC card touch this panel.

You can use these transportation-related smart card ↓ ↓

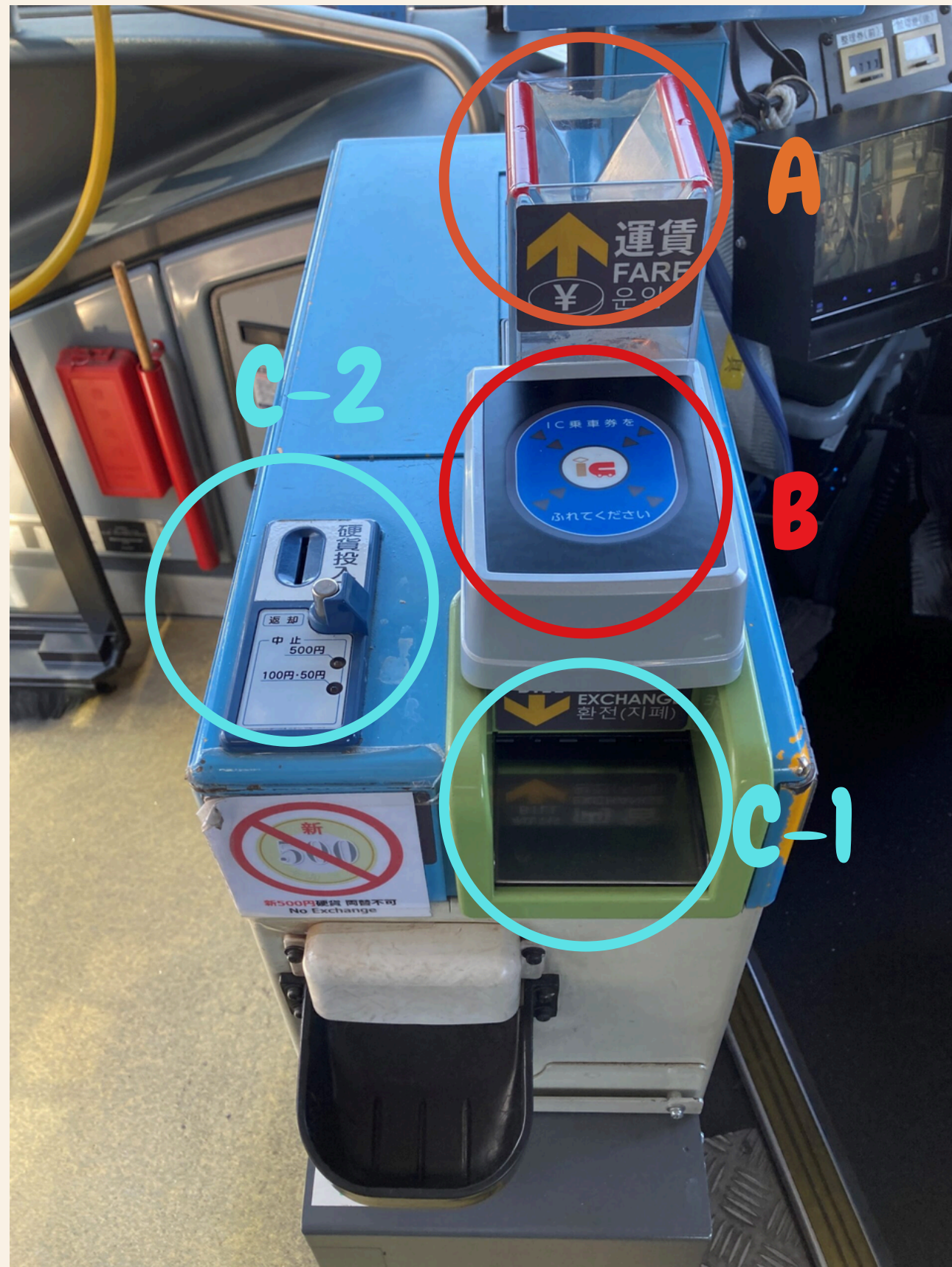




**When the bus gets close to where you want to get off...**

**When your stop is approaching, press this to signal the driver that you wish to get off at the next stop.**

# WHEN YOU GET OFF THE BUS...



## Next Bus Stop

The display next to the driver shows the next stop, as well as the price of the ride corresponding to the numbered ticket.

**A = farebox\*** (where you put the money and the ticket)

\*You have to put the exact fare amount. You won't get any change.

**B = IC card reader** (ignore if you don't have an IC card)

**C-1 = money exchange** (you can only put ¥1000)  
IC card balance can be charged

**C-2 = the exchanged cash**(coins only)

# Important Notice!!

Example

平日用時刻表 Train Departures / Weekdays		土曜・休日用時刻表 Train Departures / Saturdays & Holidays	
45	5	59	Min
1 11 24 37 45 54	6	18 32 46	
0 7 16 26 36 45 53 57	7	11 21 32 39 45 54	
0 3 9 12 15 19 24 27 30 33 39 42 45 48 53 56	8	10 17 25 32 38 47 55	
0 3 9 15 21 25 34 38 45 48 56	9	7 11 21 30 39 48 52	
3 6 17 22 30 40 50 54	10		
51 54	11		
51 54	12		
51 54	13		
0 7 15 24 33 41 48 52	14		
6 14 21 29 36 44 51	15		
0 6 14 21 29 36 46 53	16		
4 10 16 23 30 36 40 47 52 58	17		
3 8 12 16 24 28 37 44 50 55	18		
2 8 14 20 28 32 38 44 50 55	19		

Most buses and trains in Japan have different schedules for weekdays and weekends/public holidays.



# USEFUL APPS TO CHECK BUS/TRAIN TIME



## NAVITIME JAPAN



 English, Korean, Chinese, Spanish, French, and more

Train route search, map, travel guides, itinerary, coupons among other services.

## JAPAN OFFICIAL TRAVEL APP



 English, Korean, Chinese

Train and bus route search, travel guide available. Also recommend other useful guiding apps

## BUS NAVITIME



 Only Japanese

Weather report, bus route search and map available.

## YAHOO! TRANSFER GUIDE



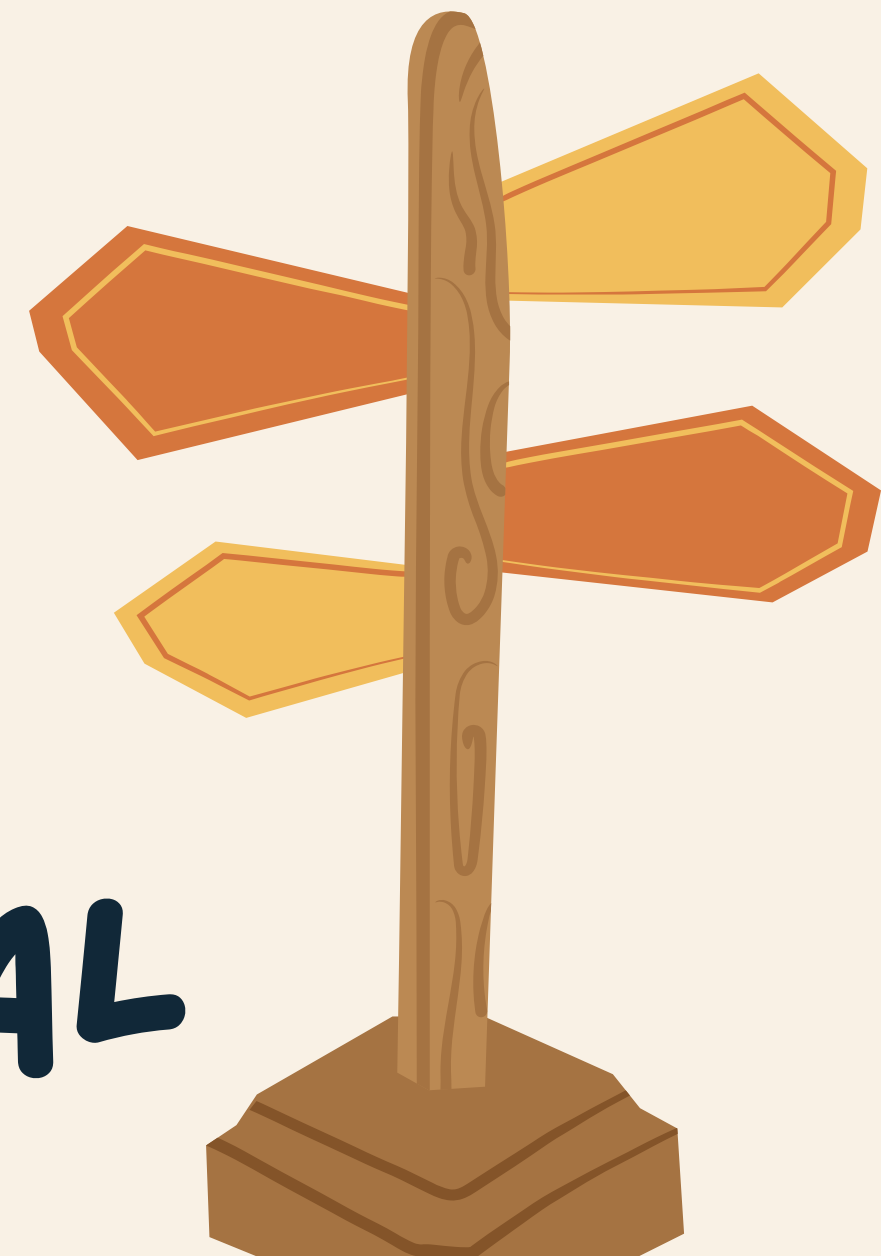
 Only Japanese

Shows train and bus routes.



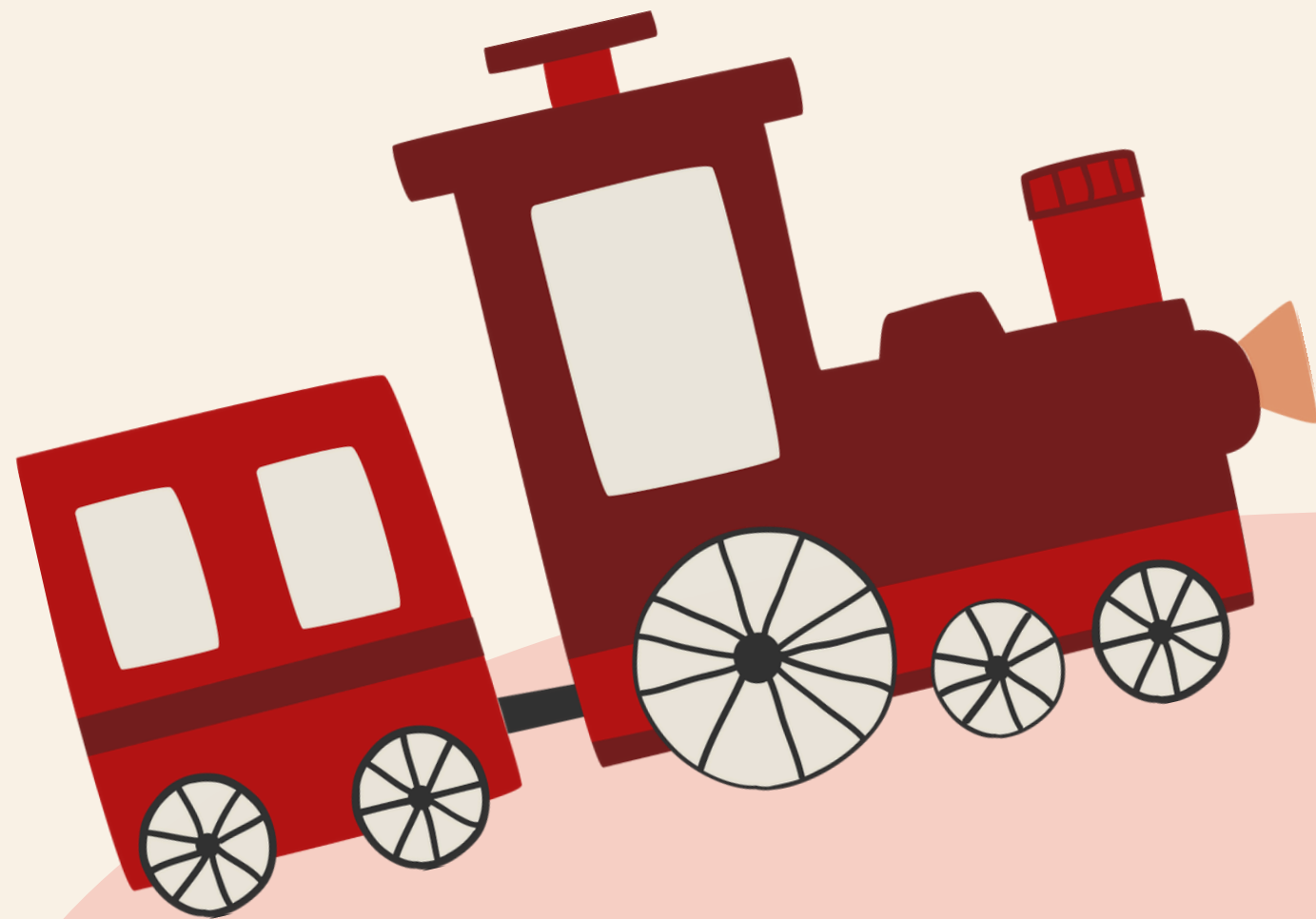
# ITO CAMPUS AREA

- DORMITORY 1
- DORMITORY 2
- DORMITORY 3
- ITO HARMONY HOUSE
- SETTLE INTERNATIONAL



GO TO

DORMITORY 1 · 2 · 3



# EXTERIOR OF DORMITORY1 · 2 · 3



**DORMITORY1**



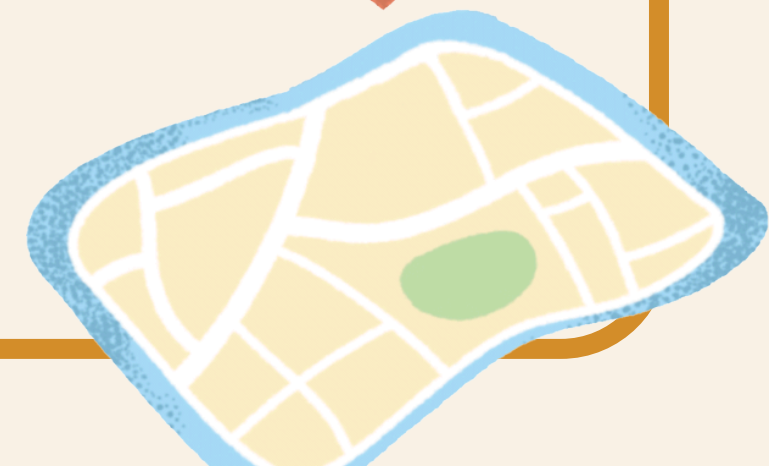
**DORMITORY2**



**DORMITORY3**

# ADDRESS • BUSINESS HOURS

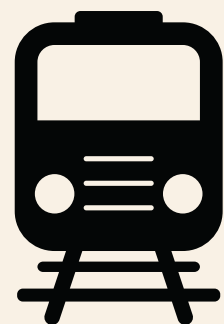
Dormitory 1	674 Kuwabara, Nishi ward, Fukuoka, 8190382	9am - 6pm (Everyday)  *Security guard will take care of you outside business hours.
Dormitory 2		
Dormitory 3		



# DORMITORY I II III FROM THE AIRPORT

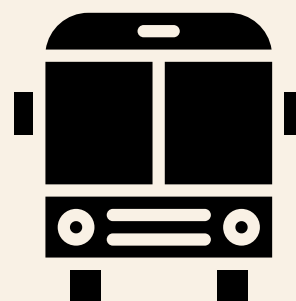
TOTAL FARE:  
900JPY

## Fukuoka Airport Station



Take the train of  
“Fukuoka City Subway-  
Kuko” line to go to  
“Kyudai-Gakkentoshi”  
Station (¥570).

## Kyudai-gakentoshi Station



Take the Showa Bus via  
“Susenji” or “Gakuen-dori”  
or “Yokohama-Nishi”, then  
get off at “Big Orange” bus  
Stop (¥330).

## Big Orange bus stop



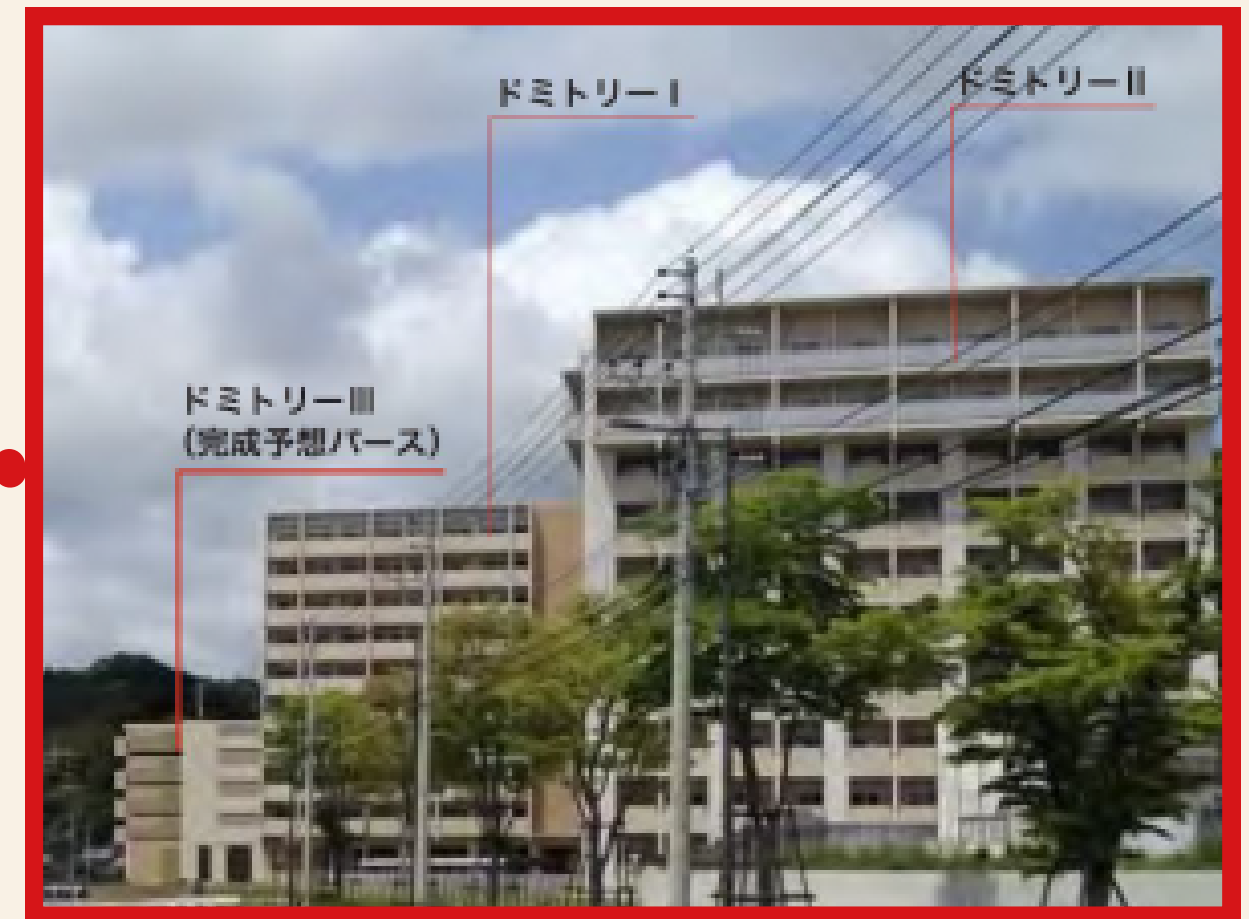
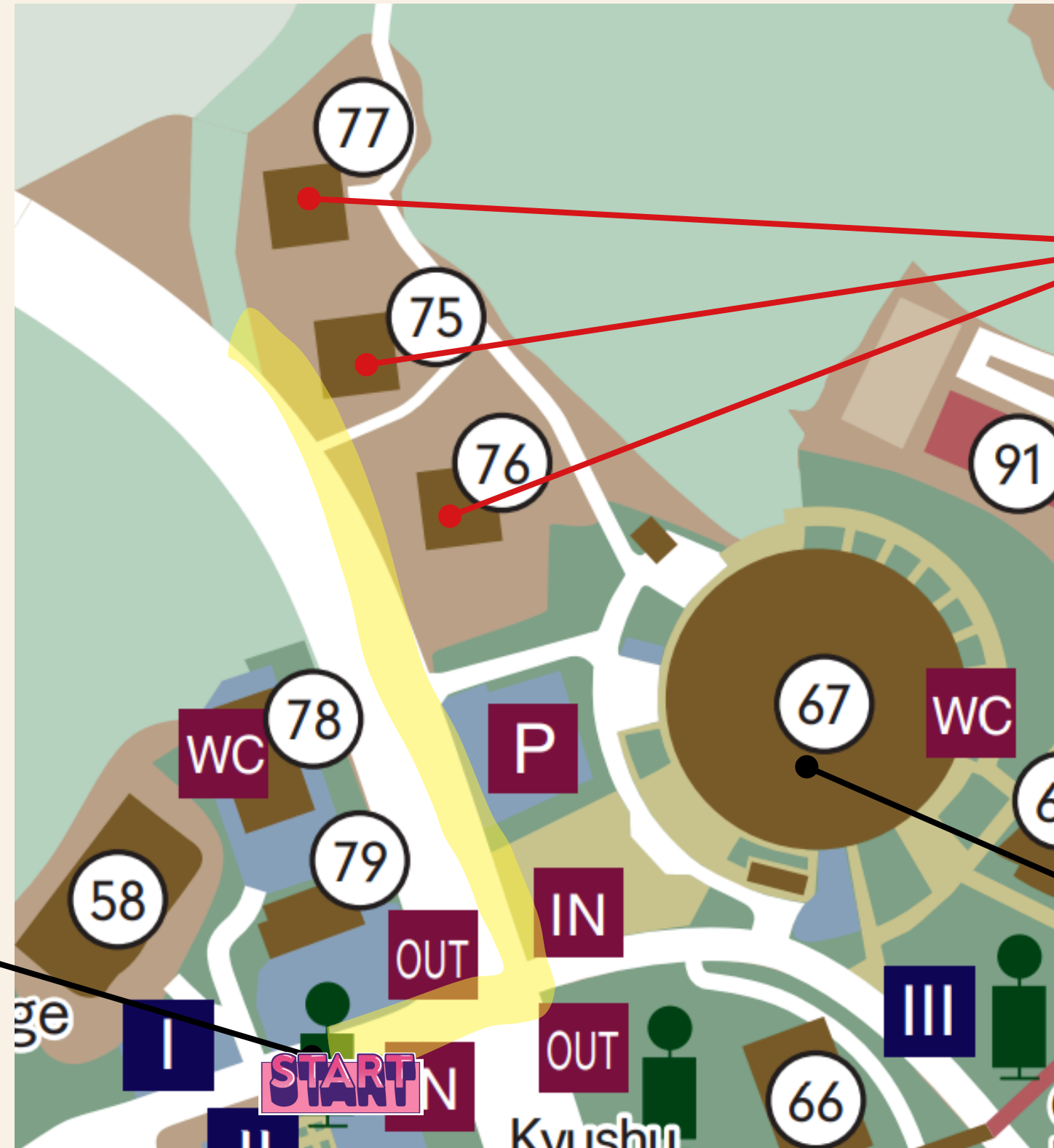
Walk about 5 mins

## Dormitory I II III



# AFTER GETTING OFF BUS

75. Dormitory 1 / 76. Dormitory 2 / 77. Dormitory 3



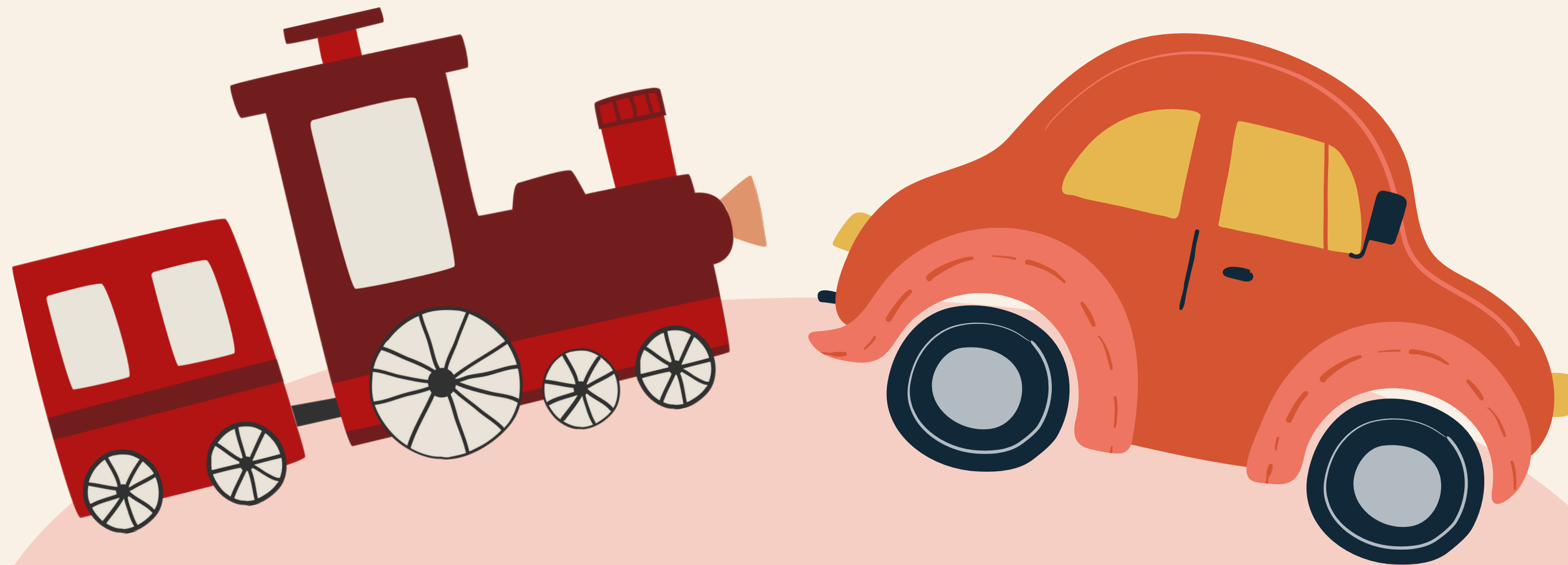
“Big Orange” bus stop



67. Shiiki Hall



GO TO  
ITO HARMONY HOUSE



# EXTERIOR OF ITO HARMONY HOUSE



# ADDRESS • BUSINESS HOURS

Ito Harmony House

522 Kuwabara, Nishi ward,  
Fukuoka, 8190382

9am - 6pm  
(Everyday)

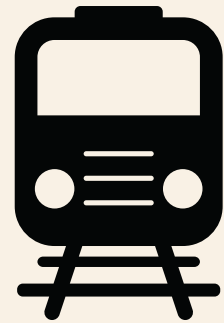
\*Security guard will take care of you  
outside business hours.



# ITO HARMONY HOUSE FROM THE AIRPORT

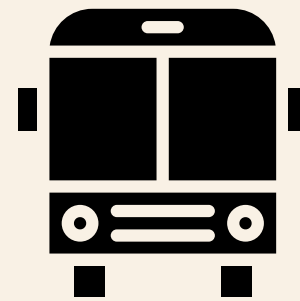
TOTAL FARE:  
900JPY

## Fukuoka Airport Station



Take the train of  
“Fukuoka City Subway-  
Kuko” line to go to  
“Kyudai-Gakkentoshi”  
Station (¥570).

## Kyudaigakentoshi Station



Take the Showa Bus via  
“Susenji” or  
“Yokohama-Nishi” then  
get off at “East Gate”  
Bus Stop. (¥330).

## East Gate bus stop



Walk about 10 mins

## Ito Harmony House

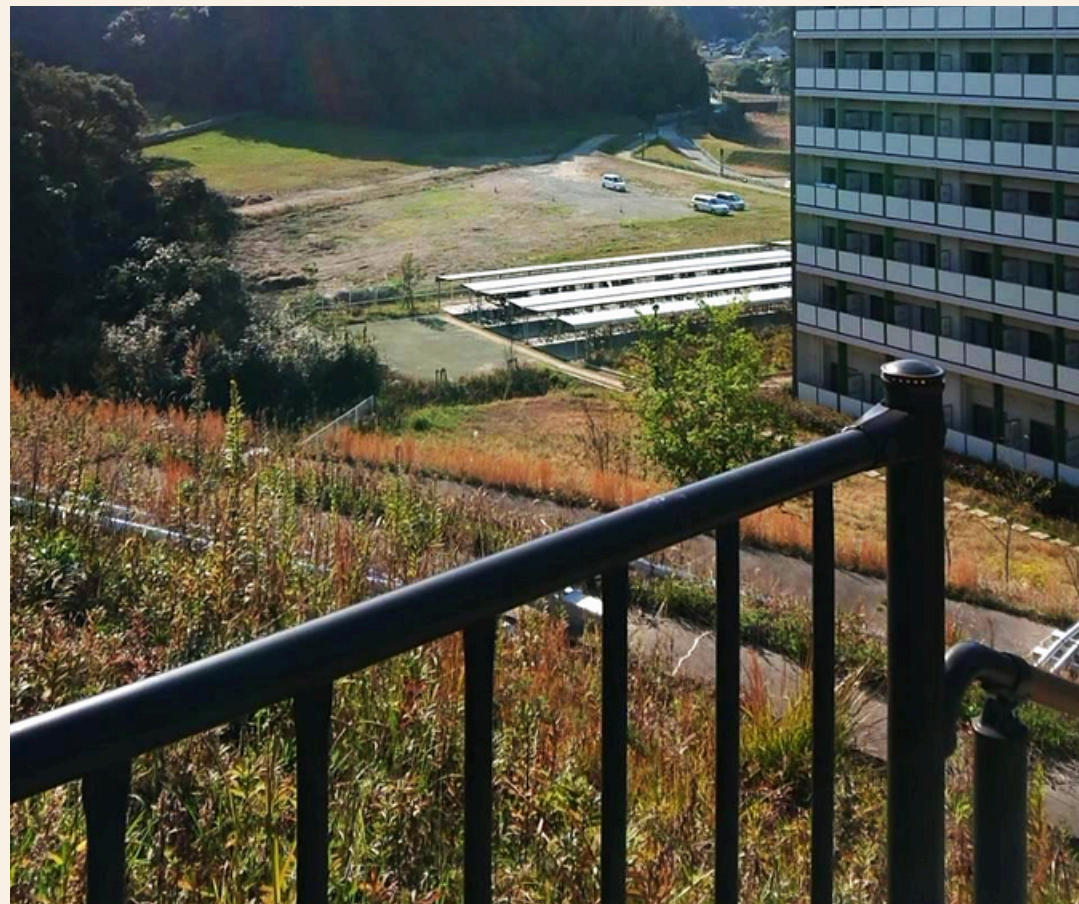


# AFTER GETTING OFF BUS



Route 1 : Yellow Line\*    Route 2 : Blue Line

\*If you choose Route 1, There are stairs.



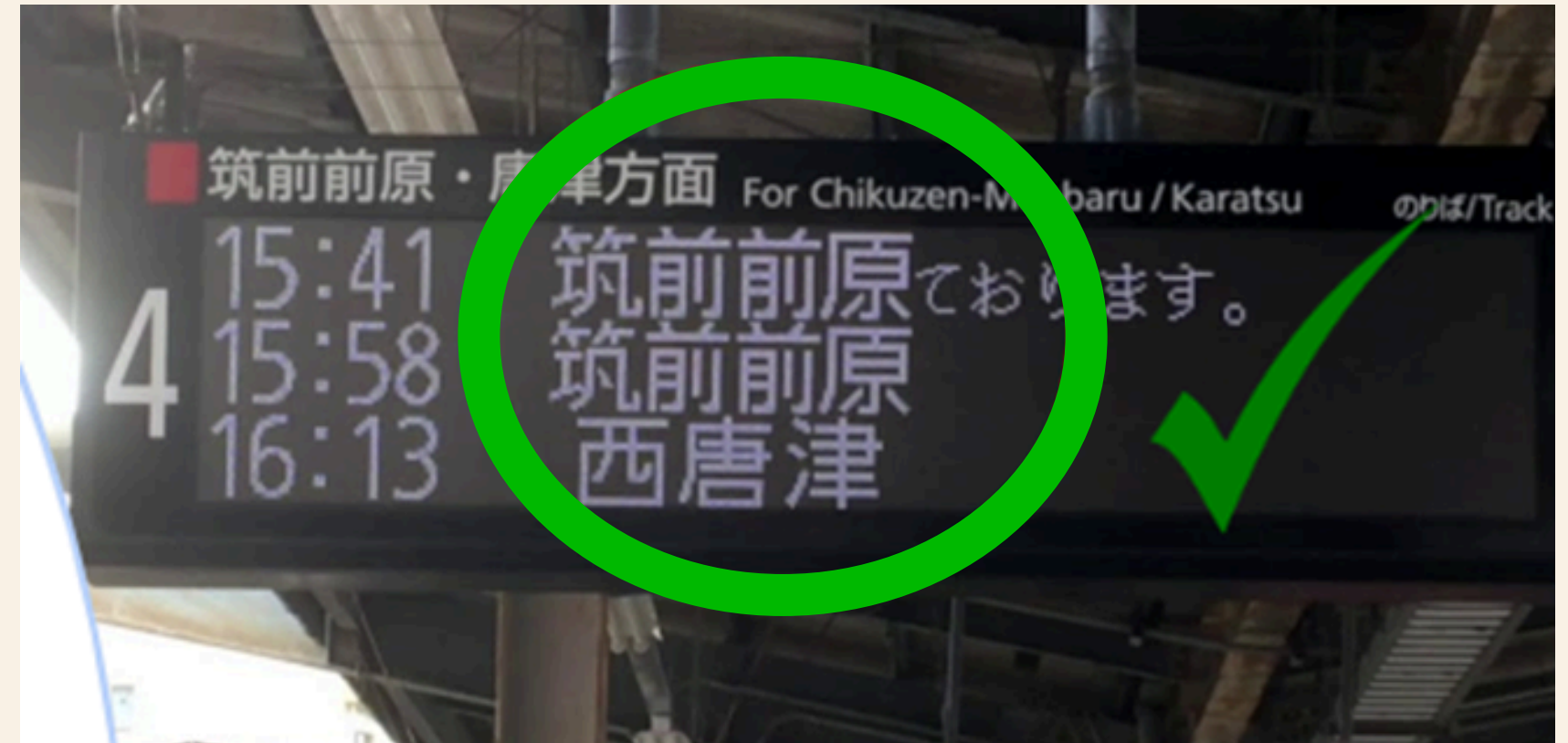
# Important Notice!!

When riding the train to “**Kyudai-Gakkentoshi Station**”, make sure to get on the trains for

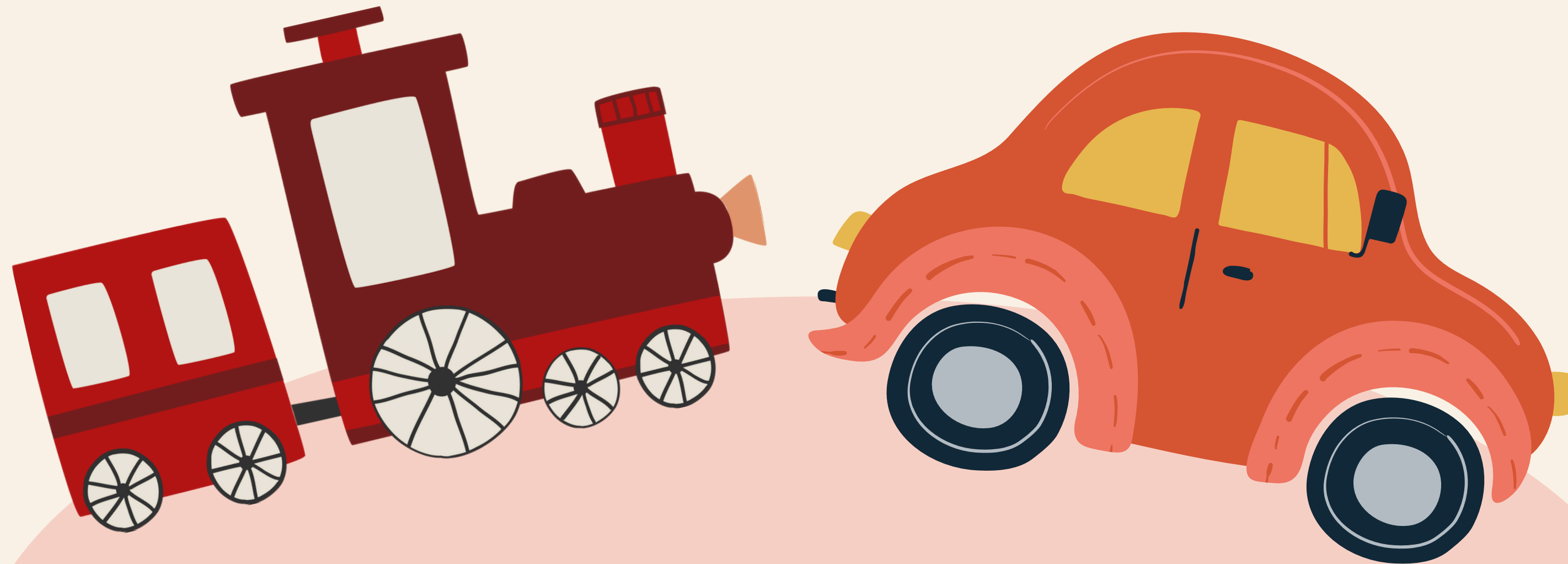
- “**Chikuzen-Maebaru (筑前前原)**”
- “**Nishi-Karatsu (西唐津)**”
- “**Chikuzen-Fukae (筑前深江)**” .

If you get on the train to “**Meinohama(姪浜)**”, you will have to transfer once.

The display will show in both Japanese and English, but there may be some instances where it will only display in Japanese. Therefore, please remember the Japanese wordings.



GO TO  
SETTLE INTERNATIONAL



# EXTERIOR OF SETTLE INTERNATIONAL



# ADDRESS • BUSINESS HOURS

**Settle International**

900-3 Tomari, Itoshima  
city, Fukuoka, 8191111

10am - 5pm  
(Mon, Tues, Thurs, Fri, Sat)

*\*You cannot move in on Sunday,  
Wednesday, and National holidays*

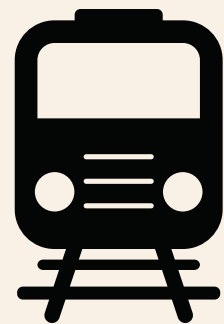


# SETTLE INTERNATIONAL FROM THE AIRPORT

TOTAL FARE:  
980JPY

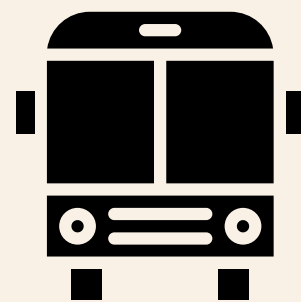
## ROUTE 1

**Fukuoka Airport  
Station**



Take the train of  
“**Fukuoka City Subway-  
Kuko**” line to go to  
“**Kyudai-Gakkentoshi**”  
Station (¥570).

**Kyudaigakkentoshi  
Station**



Take the Showa Bus of  
“**Kyudai Line**” bound for  
“**Bussei dorm-mae**” or  
“**Ichiran no Mori**”, then  
get off at “**International  
Village**” Bus Stop. (¥410).

**International  
Village bus stop**



Walk about 1min

**Settle International**



### Note:

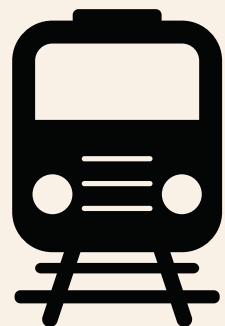
The bus to international village  
will usually run once per hour.

# SETTLE INTERNATIONAL FROM THE AIRPORT

TOTAL FARE:  
820JPY

## ROUTE 2

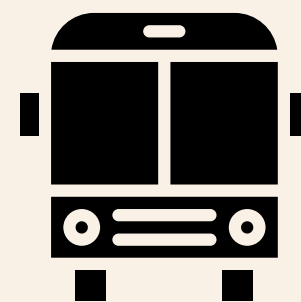
**Fukuoka Airport  
Station**



**Hatae Station**



**Sannomiya-kita  
bus stop**



**Tomari North Entrance  
bus stop**



**Settle  
International**



Take the train of  
“**Fukuoka City  
Subway-Kuko**” line to  
go to “**Hatae**” station  
(¥620).

The bus stop towards  
the North Exit.Walk  
about 7 mins.

Take the Showa bus of  
“**Kyudai Line** (via  
Takada)” to go to “**Tomari  
North Entrance**” bus stop  
(¥200).

Walk about 4 mins.

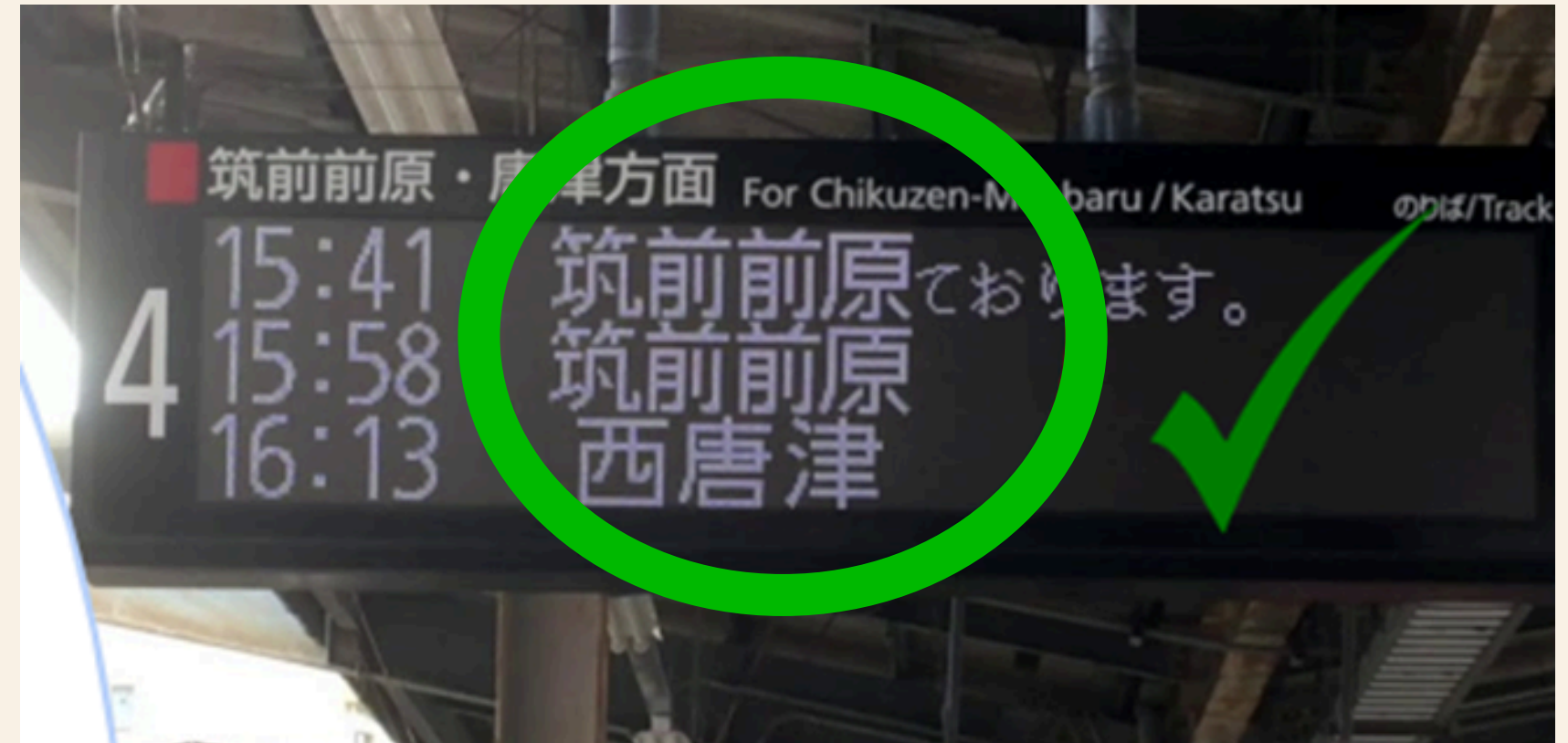
# Important Notice!!

When riding the train to “**Kyudai-Gakkentoshi Station**”, make sure to get on the trains for

- “**Chikuzen-Maebaru (筑前前原)**”
- “**Nishi-Karatsu (西唐津)**”
- “**Chikuzen-Fukae (筑前深江)**” .

If you get on the train to “**Meinohama(姪浜)**”, you will have to transfer once.

The display will show in both Japanese and English, but there may be some instances where it will only display in Japanese. Therefore, please remember the Japanese wordings.

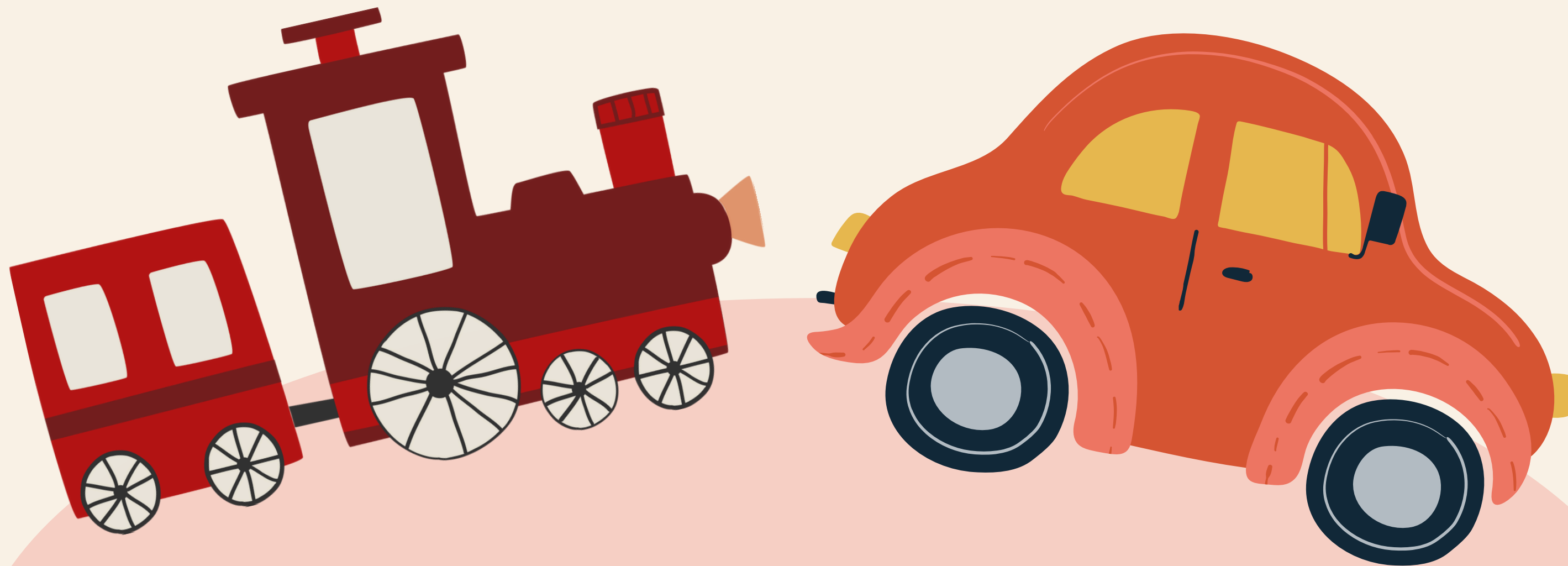




# OHASHI • CHIKUSHI CAMPUS AREA

- FUKUOKA CITY INTERNATIONAL CENTER
- IJIRI INTERNATIONAL HOUSE
- CHIKUSHI INTERNATIONAL HOUSE

GO TO  
FUKUOKA CITY  
INTERNATIONAL CENTRE



# EXTERIOR OF FUKUOKA CITY INTERNATIONAL CENTRE (FCIC)



# ADDRESS • BUSINESS HOURS

**Fukuoka City  
International Center  
(FCIC)**

4-1 Tenyamachi, Hakata  
Ward, Fukuoka, 8120025

9am - 5pm  
(Weekdays)

*\*Security guard in 4th floor will take care  
of you outside business hours.*



# FUKUOKA CITY INTERNATIONAL CENTRE FROM THE AIRPORT

TOTAL FARE:  
260JPY

## Fukuoka Airport Station



## Nakasukawabata Station



## Fukuoka City International Centre



Take the train of “**Fukuoka City Subway-Kuko**” line to go to “**Nakasu Kawabata**” Station (¥260).

Exit from “**Exit 7**” and walk about 5 mins.

# A FEW REMINDERS...

WHEN YOU FIND EXIT 7 AT NAKASU-KAWABATA STATION

You can follow the guide in yellow.  
If you are unable to find the exit,  
show the sentence below.

“7番出口はどこですか？”



# A FEW REMINDERS...

WHEN YOU WALK TO FUKUOKA CITY INTERNATIONAL CENTRE



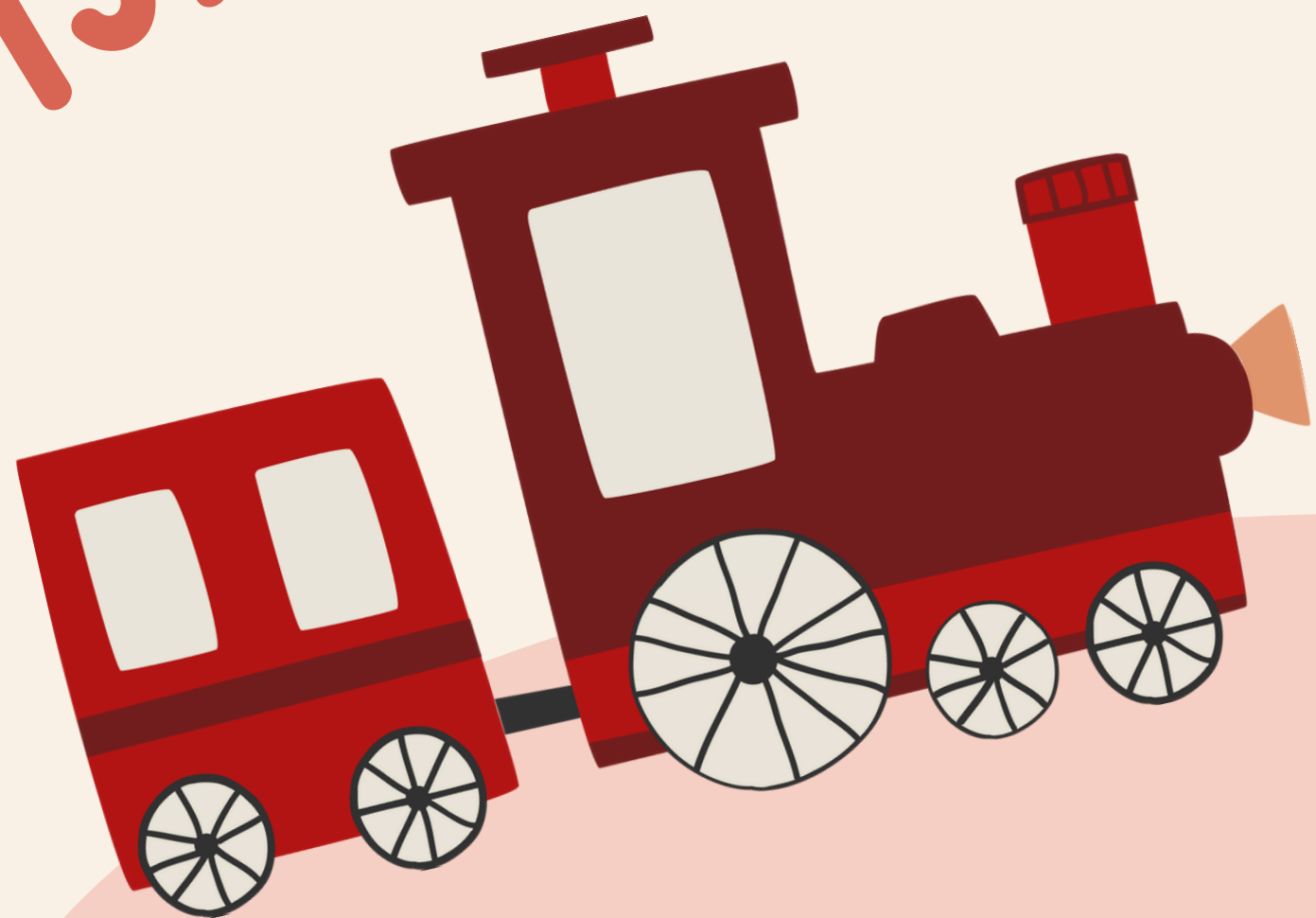
O  
P  
P  
O  
S  
I  
T  
E



The "Fukuoka City International Centre "  
is located opposite of "Reisen Park"

GO TO

IJIRI INTERNATIONAL HOUSE



# EXTERIOR OF IJIRI INTERNATIONAL HOUSE



Ijiri International House



# ADDRESS • BUSINESS HOURS

Ijiri International House

2-36-40, Ijiri, Minami Ward,  
Fukuoka, 8111302

9am - 5pm  
(Weekdays, Saturday)

*\*You cannot move in on Sunday and  
National Holidays*

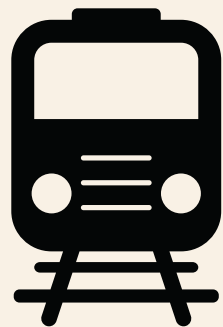


# IJIRI INTERNATIONAL HOUSE FROM THE AIRPORT

TOTAL FARE:  
510JPY

## ROUTE 1

**Fukuoka Airport  
Station**



**Tenjin Subway  
Station**



**Nishitetsu  
Fukuoka station**



**Nishitetsu  
Ijiri Station**



**Ijiri International  
House**



Take the train of  
“Fukuoka City  
Subway-Kuko” line to  
go to “Tenjin” subway  
station (¥260).

Walk about 7 mins.

Take the train of  
“Nishitetsu Tenjin-  
Omuta” line to go to  
“Ijiri” station (¥250).

Walk about 6 mins.

# ROUTE 1

## IJIRI STATION TO IJIRI INTL HOUSE



# ROUTE 1

## A FEW REMINDERS...

WHEN YOU CHANGE LINE FROM TENJIN SUBWAY STATION TO NISHITETSU FUKUOKA STATION

Find Exit No.6 near the ticket gate.

After reaching exit 6, you can follow the guidance of the video;

<https://www.youtube.com/watch?v=kVKKzZ-dP-g>



# ROUTE 1

## A FEW REMINDERS...

WHEN YOU WALK FROM TENJIN STATION TO  
NISHITETSU FUKUOKA STATION

You can follow the signs on the top.  
If you are unable to find the way to  
Nishitetsu Fukuoka Station,  
show the sentence below.

“西鉄福岡駅はどこですか？”



# ROUTE 1

# A FEW REMINDERS...



## WHEN YOU TAKE A TRAIN AT NISHITETSU FUKUOKA STATION

1. Find the departure time table
2. You can only take a local train.  
**Express/Limited Express train won't stop at Ijiri station.**
3. Any local train departing from Nishitetsu-Fukuoka will take you to Ijiri station since it is the terminal station.

In the example photo, a local train will depart from the platform No.2 at 7:02 am.

特急	大牟田	7:00	3
Ltd.Exp	Ōmuta	6両	2ドア
普通	大善寺	7:02	2
Local	Daizenji	4両	4ドア
急行	津福	7:07	1
Express	Tsubuku	7両	3ドア

# IJIRI INTERNATIONAL HOUSE FROM THE AIRPORT

TOTAL FARE:  
470JPY

## ROUTE 2

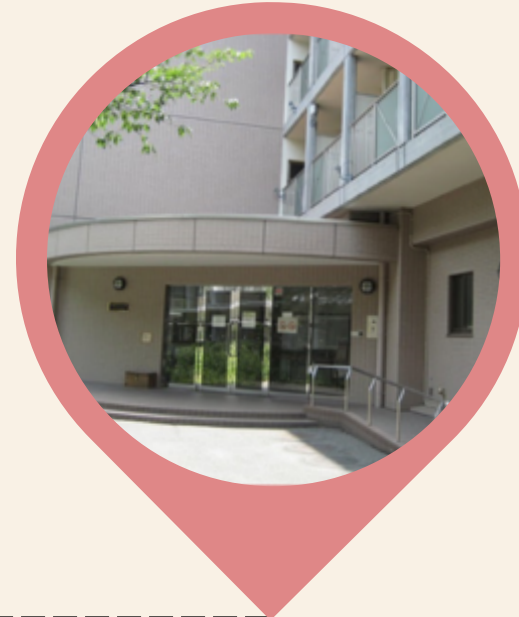
Fukuoka Airport  
Station

Hakata Subway  
Station

Hakata JR station

Sasabaru  
Station

Ijiri International  
House



Take the train of  
"Fukuoka City  
Subway-Kuko" line to  
go to "Hakata" subway  
station (¥260).

Walk about 5 mins.

Take the train of "JR  
Kagoshima" line to go  
to "Sasabaru" station  
(¥210).

Walk about 9 mins.



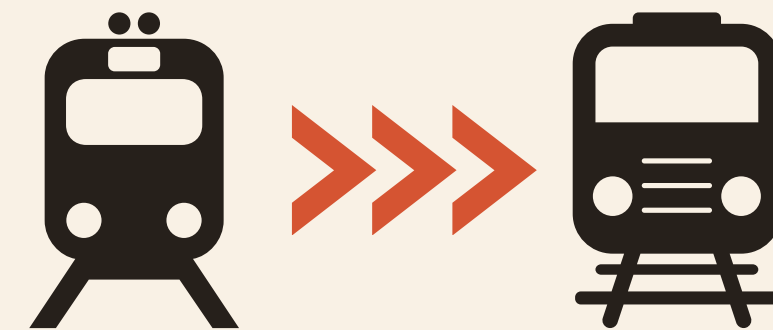
# ROUTE 2 SASABARU STATION TO IJIRI INTL HOUSE



# ROUTE 2

# A REMINDER...

PLEASE TRANSFER FROM SUBWAY TO JR LINE  
AT HAKATA STATION



① Going up to Central Ticket Gate  
(中央改札口)



② Exit Central Ticket Gate

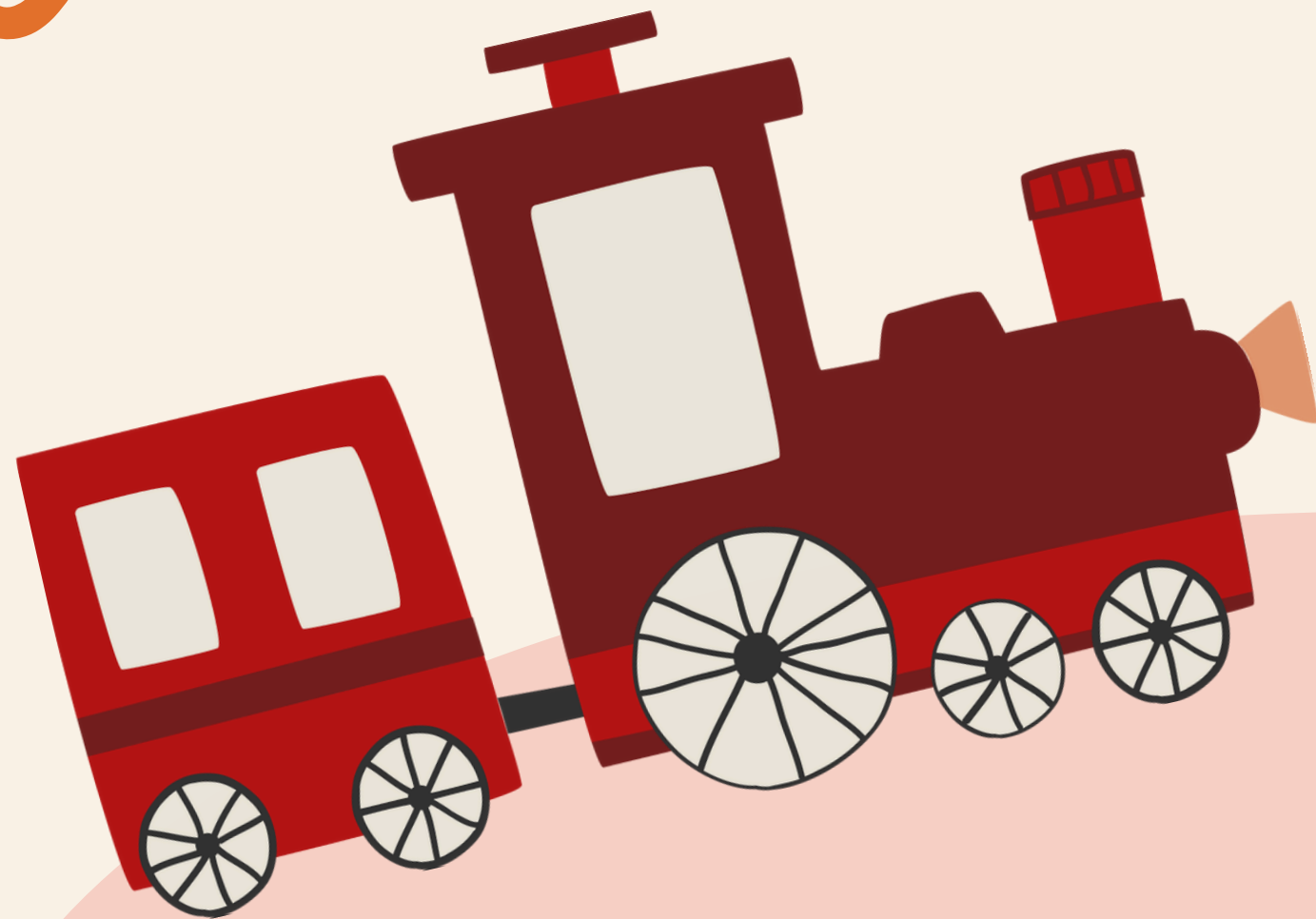


③ Go up the escalator from "Central 3"



GO TO

CHIKUSHI INTERNATIONAL HOUSE



# EXTERIOR OF CHIKUSHI INTERNATIONAL HOUSE



※Image is for illustrative purposes only.

# ADDRESS • BUSINESS HOURS

**Chikushi International  
House**

5-18, Kasuga Park, Kasuga-shi,  
Fukuoka, 8160811

9am - 5pm  
(Weekdays, Saturdays)

※You can't move in on Sundays,  
National holidays



# CHIKUSHI INTERNATIONAL HOUSE FROM THE AIRPORT

TOTAL FARE:  
490Jpy

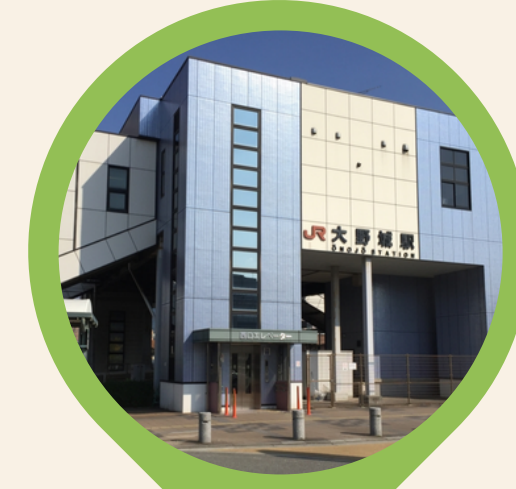
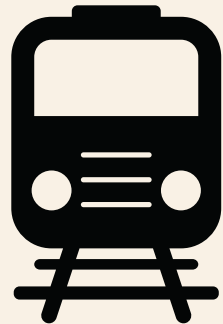
Fukuoka Airport  
Station

Hakata Subway  
Station

Hakata JR station

Onojo  
station

Chikushi  
International House



Take the train of  
“Fukuoka City  
Subway-Kuko” line to  
go to “Hakata” subway  
station (¥260).

Walk about 5 mins.

Take the train of “JR  
Kagoshima” line to go  
to “Onojo” station  
(¥230).

Walk about 10 mins.

# ONOJO STATION TO CHIKUSHI INTERNATIONAL HOUSE

Chikushi International House is located on the **Chikushi Campus**.

\*Only pedestrians and bicycles are allowed to pass through the Onojo Gate.



① Exit from West Exit  
of Onojo Station  
(大野城駅)



② Cross the  
crosswalk and  
turn right



③ Turn left at the  
sign of Kyushu  
University



④ Enter from  
Onojo Gate  
(大野城門)

# Route **inside** the campus



**Global Innovation Center (GIC)  
Offshore Wind Research and  
Education Center**

# Route **inside** the campus



# Route outside the campus



Kasuga Gate



Onojo Gate



Chikushi International House



# A REMINDER...

PLEASE TRANSFER FROM SUBWAY TO  
JR LINE AT HAKATA STATION



① Going up to Central Ticket Gate  
(中央改札口)



② Exit Central Ticket Gate



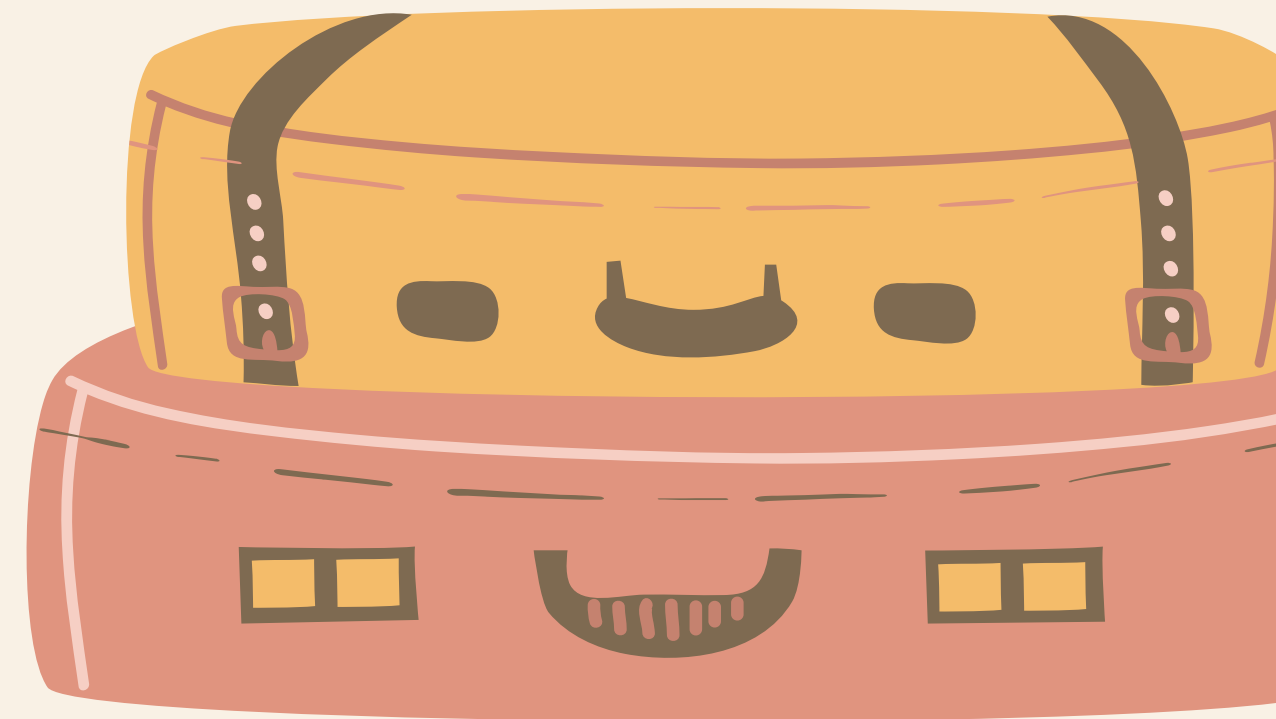
③ Go up the escalator from "Central 3"





# HOSPITAL CAMPUS AREA

- MAIDASHI INTERNATIONAL HOUSE



# EXTERIOR OF MAIDASHI INTERNATIONAL HOUSE



# ADDRESS • BUSINESS HOURS

**Maidashi International  
House**

3-1-1, Maidashi, Higashi-ku,  
Fukuoka, 8128582

10am – 5pm  
(Mon, Tues, Thurs, Fri, Sat)  
※You can't move in on Sundays,  
Wednesday, National holidays



# MAIDASHI INTERNATIONAL HOUSE FROM THE AIRPORT

TOTAL FARE:  
300JPY

## Fukuoka Airport Station



Take the train of "Fukuoka City Subway-Kuko" line to go to "Nakasu-kawabata" subway station.

## Nakasukawabata Subway Station



Take the train of "Hakozaki" line to go to "Maidashi Kyudai Byoinmae" station .

## Maidashi Kyudai Byoinmae station



Walk about 5 mins.

### When you transfer...

You can change trains without leaving the turnstiles

## Maidashi International House



# HOW TO GET TO THE DORMITORY FROM MAIDASHI KYUDAIBYOINMAE STATION

AS YOU EXIT FROM **EXIT 7..**

The hospital campus is located right next to exit 7.

Check the route **inside the campus** to get dormitory from following pages.

**EXIT 7**

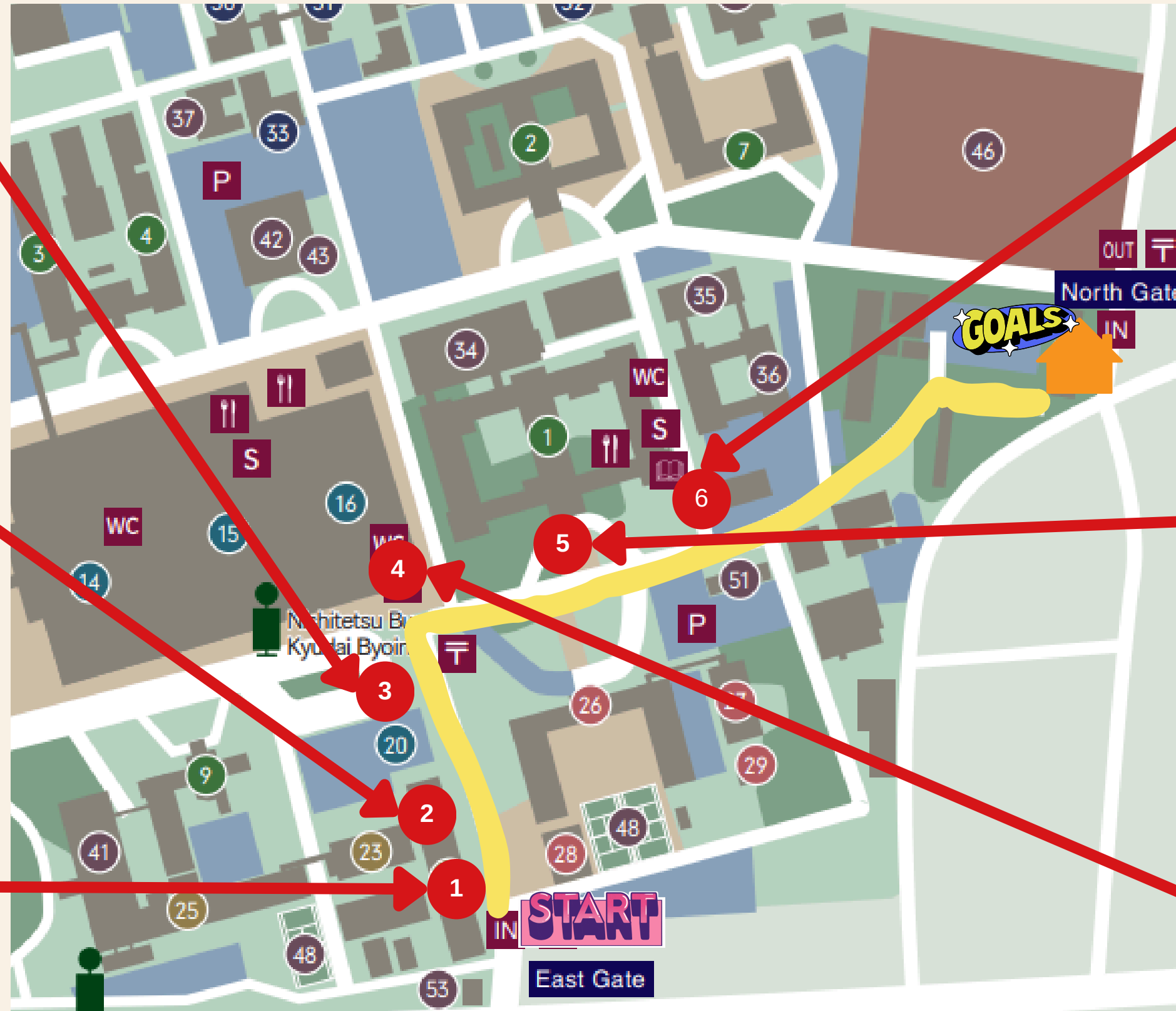


**TO THE  
CAMPUS**

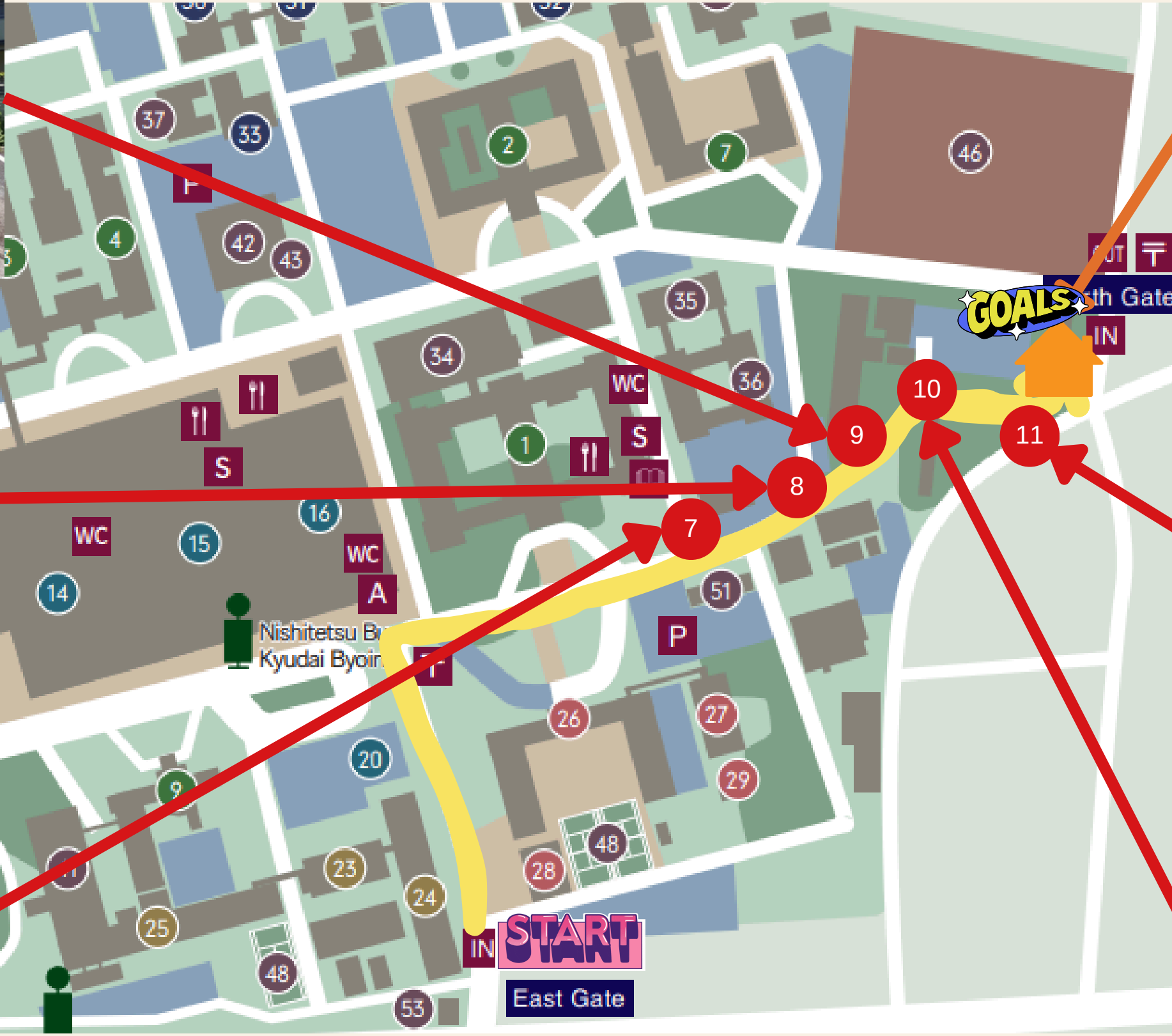


**Campus MAP**

# ROUTE INSIDE THE HOSPITAL CAMPUS



# ROUTE INSIDE THE HOSPITAL CAMPUS

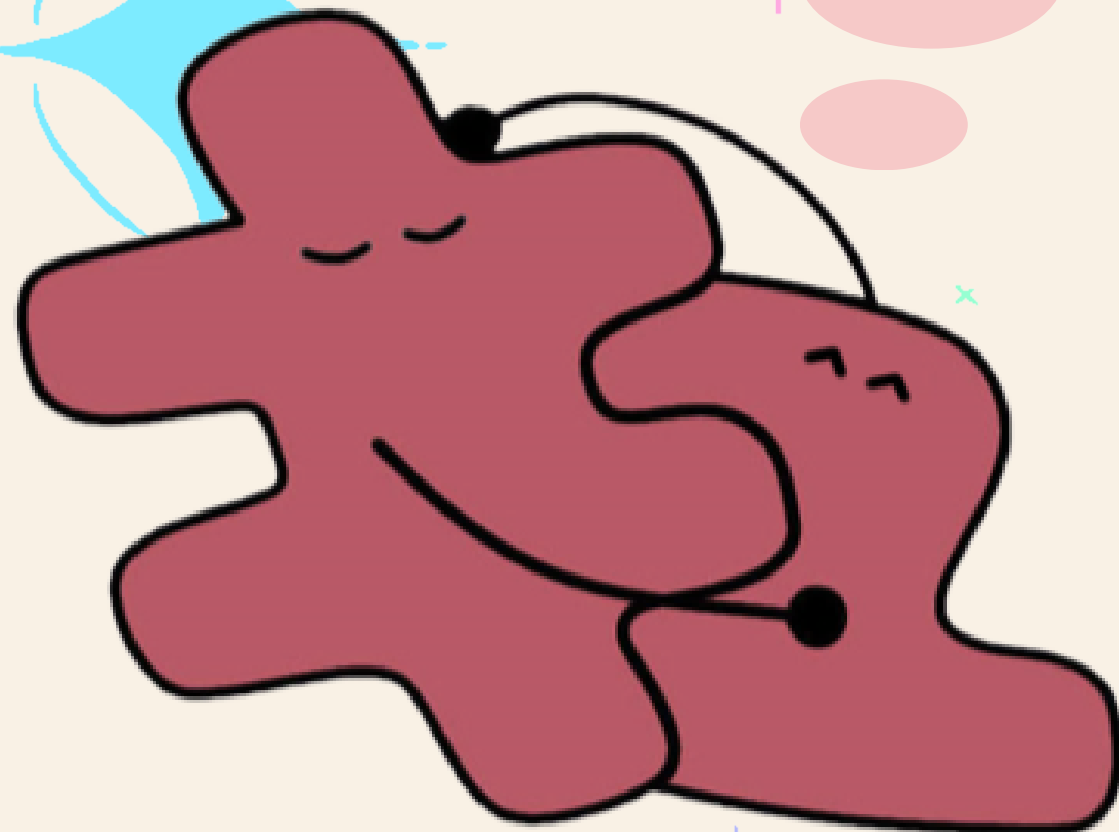


 Instagram



Website

Q-MATE IS  
HERE TO  
SUPPORT YOU





**THANK YOU  
FOR WATCHING**  
Wish your best in Fukuoka!