

Medical Facilities

with foreign language availability

This hospital list is based on information from [the Medical Information Net NAVII](#) as of May 2026. Please check each hospital or clinic's website for the latest information. Also, **be sure to confirm whether an appointment is required before visiting.**

About Language Support Levels







The following three levels are listed for the languages supported by each medical institution.

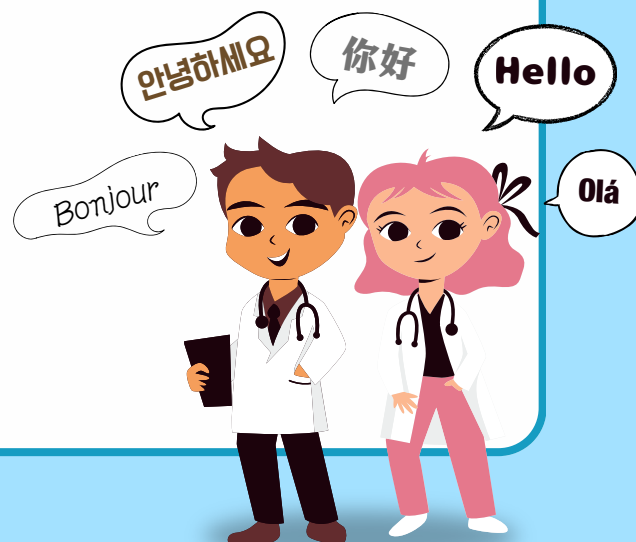
- A** : Fluent
- B** : Daily conversational level
- C** : Broken language

References: [the Medical Information Net NAVII](#)

Click on a medical department name to go to the corresponding page.

1. General Hospital
2. Surgery • Orthopaedic Surgery
3. Internal Medicine
4. Dentistry
5. Ophthalmology
6. Otorhinolaryngology
7. Dermatology
8. Psychiatry
9. Obstetrics and Gynecology
10. Pediatrics

-  : Speciality
-  : Address
-  : Opening hours
-  : Phone number
-  : Website
-  : Supported language



General Hospital

1. Fukuoka Tokushukai Hospital



※In principle, a referral and appointment from a medical institution are required.

If you do not have a referral letter, an additional fee of JPY 7,000 for medical care or JPY 5,000 for dental care will be charged, separate from the treatment cost.

⊕ Emergency Room / Internist / Surgery / Pediatrics / Psychiatry /
Dermatology / Neurosurgery / Urology / Ophthalmology / Orthopedics
/ Otolaryngology / Dentist

📍 4-5, Sugukita, Kasuga city, Fukuoka, 8160864

🕒 Mon-Fri 9 : 00 - 12 : 00

Sat 9 : 00 - 12 : 00

(Emergency Unit open 24hrs)

☎ 092-573-6622

🌐 <https://www.f-toku.jp/>

🗣 **A** : Beijing Chinese、 Taiwanese **B** : English

※The call center can help you in 21 languages

English, Chinese, Korean, Vietnamese, Filipino, Indonesian, Thai,
Nepalese, Malay, Hindi, Spanish, Portuguese, French, Russian,
Cambodian, Burmese, Ukrainian



[Open Map](#)

Surgery • Orthopaedic Surgery

1. Tetsu Clinic

⊕ Orthopaedic Surgery

📍 1-1-55, Shirakibaru, Onojo city, Fukuoka, 8160943

🕒 Mon, Tue, Thu-Sat 8 : 30 - 12 : 30, 14 : 00 - 18 : 00

Wed 8 : 30 - 12 : 30

☎ 092-501-8161

🌐 <http://tetsu-clinic.com/>

🗣 **A** : Cantonese, Mandarin, Taiwanese

B : English



[Open Map](#)

2. Zaitzu Orthopaedics Clinic

⊕ Orthopaedic Surgery

📍 2F, 1-9-24, Shimoori, Onojo city, Fukuoka, 8160952

🕒 Mon, Tue, Thu, Fri 9 : 00 - 12 : 30, 14 : 00 - 17 : 30

Wed, Sat 9 : 00 - 12 : 30

☎ 092-588-1720

🌐 <https://zaitzu-oc.com/>

🗣 **B**: English



[Open Map](#)

3. Hara geka clinic

- ⊕ Surgery / Orthopaedic Surgery
- 📍 5-3-11, Shirakibaru, Onojo city, Fukuoka, 8160943
- 🕒 Mon, Tue, Thu, Fri 8 : 30 - 12 : 30, 14 : 00 - 17 : 30
Wed, Sat 8 : 30 - 12 : 30
- ☎ 092-591-2122
- 🌐 <https://www.harageka.org/medical/>
- 🗣 **C**: English

[Note] Gastroenterology, Proctology, Anesthesiology are also available.



[Open Map](#)

Internal Medicine

1. Ashizawa Internal Clinic

- ⊕ Internist / Gastroenterological
- 📍 1-14-24 Shirakibaru, Onojo city, Fukuoka, 8160943
- 🕒 Mon-Fri 9 : 00 - 12 : 30, 14 : 00 - 18 : 00
Sat 9 : 00 - 12 : 30
- ☎ 092-591-3928
- 🌐 <https://www.f-toku.jp/cooperation/detail.php?id=73>
- 🗣 **A** : Beijing Chinese, Taiwanese
B : English



[Open Map](#)

2. Ichikawa Clinic

- ⊕ Internist / Gastroenterological
- 📍 1-1-55 Shirakibaru, Onojo city, Fukuoka, 8160943
- 🕒 Mon, Tue, Thu-Sat 9 : 00 - 12 : 30 14 : 00 - 18 : 00
Wed 9 : 00 - 12 : 30
- ☎ 092-591-5525
- 🌐 <https://www.iryuu.teikyouseido.mhlw.go.jp/znk-web/juminkanja/S2430/initialize?prefCd=40&kikanCd=2400037040&kikanKbn=2>
- 🗣 **B** : English

[NOTE] Psychosomatics, and Neurology are also available



[Open Map](#)

3. Utsunomiya Medical Clinic

- 🏥 Internist / Respiratory / Gastroenterologic
- 📍 2-1-7 Mikasagawa, Onojo city, Fukuoka, 8160912
- 🕒 Mon, Tue, Thu, Fri 9 : 00 - 12 : 30 14 : 30 - 18 : 00
Wed 9 : 00 - 12 : 30 15 : 00 - 17 : 00
Sat 9 : 00 - 12 : 00
- ☎️ 092-982-3113
- 🌐 <https://www.umclnc.com/>
- 🗣️ B : English



[Open Map](#)

4. Fukaumi Internal Clinic

- 🏥 Internist / Cardiology / Respirology
- 📍 2-18-13 Shimoori, Onojo city, Fukuoka, 8160952
- 🕒 Mon, Tue, Thu, Fri 9 : 00 - 12 : 30 14 : 00 - 17 : 30
Wed, Sat 9 : 00 - 12 : 30
- ☎️ 092-572-6266
- 🌐 <https://fukaumi-naika.info/>
- 🗣️ B : English



[Open Map](#)

5. Iharakasuga Clinic

- 🏥 Internist / Cardiology / Hepatology / Gastroenterology
- 📍 3-22, Takaramachi, Kasuga city, Fukuoka, 8160912
- 🕒 Mon-Wed, Fri 8 : 00 - 13 : 00 14 : 30 - 17 : 00
Thu, Sat 8 : 00 - 13 : 00
- ☎️ 092-582-1478
- 🌐 <http://iharakasuga-clinic.jp/>
- 🗣️ B : English



[Open Map](#)

1. Hanada Dental Clinic

- 📍 1-18, Chikushidai, Kasuga city, Fukuoka, 8160822
- 🕒 Mon, Tue, Thu, Fri 9 : 00 - 13 : 00, 14 : 00 - 18 : 00
Wed, Sat 9 : 00 - 14 : 00
- ☎️ 092-571-5510
- 🌐 <https://hanada-dental.net/>
- 🗣️ A : English



[Open Map](#)

2. Iwatani Shika Syonishika

- 📍 5-3-11, Kamioori, Onojo city, Fukuoka, 8160955
- 🕒 Mon, Tue, Wed, Fri, Sat 9 : 00 - 13 : 00 14 : 00 - 18 : 00
- ☎️ 092-595-1381
- 🌐 <https://www.idcpp.com/>
- 🗣️ B : English



[Open Map](#)

3. Okamura Dental Clinic

- 📍 3-215-1, Noborimachi, Kasuga city, Fukuoka, 8160851
- 🕒 Mon, Tue, Wed, Fri 9 : 30 - 13 : 30 15 : 00 - 19 : 30
Thu, Sat 9 : 30 - 13 : 00 14 : 00 - 17 : 00
- ☎️ 092-586-2555
- 🌐 <https://okamura-odc.com/>
- 🗣️ B : English



[Open Map](#)

4. Acrossmall Kasuga Dental Clinic

- 📍 Acrossmall Kasuga 1F, 5-17, Kasuga, Kasuga city, Fukuoka, 8160814
- 🕒 Mon, Wed-Sun, holidays 10 : 00 - 13 : 30, 14 : 30 - 19 : 30
- ☎️ 092-589-7007
- 🌐 <https://www.total-dc-kasuga.com/>
- 🗣️ C : English



[Open Map](#)

Ophthalmology

1. Nakamura Eye Clinic

- 📍 1-5-3, Shirakibaru, Onojo city, Fukuoka, 8166943
- 🕒 Mon, Tue, Thu, Fri 9 : 00 - 12 : 00 14 : 00 - 17 : 00
Wed, Sat 9 : 00 - 12 : 00
- ☎️ 092-591-1076
- 🌐 <http://nakamura-eye.net/>
- 🗣️ B : English



[Open Map](#)

2. Inoue Eye Clinic

- 📍 2-5-15 1F, Sakaemachi, Onojo city, Fukuoka, 8160924
- 🕒 Mon, Tue, Thu, Fri 9 : 00 - 13 : 00 14 : 30 - 18 : 00
Sat, Sun 9 : 00 - 13 : 00
- ☎️ 092-575-0031
- 🌐 <https://www7b.biglobe.ne.jp/~eye/index.html>
- 🗣️ B : English



[Open Map](#)

Otorhinolaryngology

1. Ide ENT clinic

- 📍 4-3-18, Mimamigaoka, Onojo city, Fukuoka, 8160964
- 🕒 Mon, Tue, Thu, Fri 8 : 30 - 12 : 00 14 : 00 - 17 : 30
Wed, Sat 9 : 00 - 12 : 00
- ☎️ 092-596-2344
- 🌐 <https://idejibika.com/>
- 🗣️ A : English



[Open Map](#)

2. Matsuda Jibiinnkouka lin

- 📍 1-14-12, Higashioori, Onojo city, Fukuoka, 8160941
- 🕒 Mon, Tue, Wed, Fri 9 : 00 - 12 : 00, 14 : 00 - 18 : 00
Sat 9 : 00 - 12 : 00, 13 : 00 - 14 : 00
- ☎️ 092-585-6825
- 🌐 <http://www.mikku.co.jp/matsuda/>
- 🗣️ B : English



[Open Map](#)

3. Honda ENT Clinic

📍 3-81 2F, Kamishirozu Kasuga city, Fukuoka, 8160844

🕒 Mon, Tue, Thu, Fri 9 : 00 - 12 : 30, 14 : 30 - 18 : 00
Sat 9 : 00 - 12 : 30

☎️ 092-584-5553

🌐 <https://hondajibika-fukuoka.com/>

🗣️ C : English



[Open Map](#)

Dermatology

1. Yanagihara Dermatology Clinic

📍 4-1-16, Shirakibaru, Onojo city, Fukuoka, 8160943

🕒 Mon, Tue, Wed, Fri 8 : 30-12 : 30 14 : 00-18 : 30
Thu 9 : 00-12 : 30
Sat 9 : 00-12 : 30 14 : 00-16 : 00

☎️ 092-581-0516

🌐 <https://www.f-toku.jp/cooperation/detail.php?id=128>

🗣️ A : Mandarin, Taiwanese
C : Cantonese, English



[Open Map](#)

Psychiatry

1. Ichikawa Clinic

📍 1-1-55 Shirakibaru, Onojo city, Fukuoka, 8160943

🕒 Mon, Tue, Thu-Sat 9 : 00 - 12 : 30 14 : 00 - 18 : 00
Wed 9 : 00 - 12 : 30

☎️ 092-591-5525

🌐 <https://www.iryuu.teikyouseido.mhlw.go.jp/znk-web/juminkanja/S2430/initialize?prefCd=40&kikanCd=2400037040&kikanKbn=2>

🗣️ B : English

[NOTE] Internal Medicine, and Neurology are also available



[Open Map](#)

Obstetrics and Gynecology

1. Jono Ladies Clinic

📍 2-8-1 Ichinoya, Kasuga city, Fukuoka, 8160943
🕒 Mon, Tue, Thu, Fri 9 : 00 - 12 : 00 14 : 00 - 17 : 00
Wed 9 : 00 - 12 : 00
Sat 9 : 00 - 13 : 00

☎️ 092-584-1103

🌐 <https://www.jono-ladies.or.jp/>

🗣️ **C** : English

Multilingual voice translation equipment is available



[Open Map](#)

Pediatrics

1. Yokoyama Children's Clinic

📍 3-36, Kasugabaruhigasimachi, Kasuga city, 8160801
🕒 Mon-Wed, Fri 8 : 30 - 12 : 00 14 : 30 - 18 : 00
Thu 8 : 30 - 12 : 00
Sat 8 : 30 - 12 : 30

☎️ 092-581-1203

🌐 <https://www.yokoyama-cc.com/>

🗣️ **B** : English



[Open Map](#)